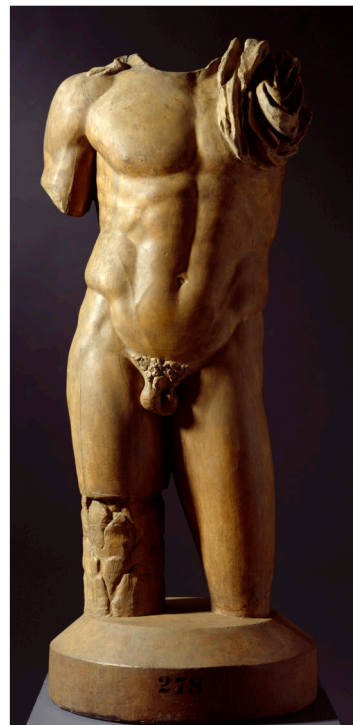
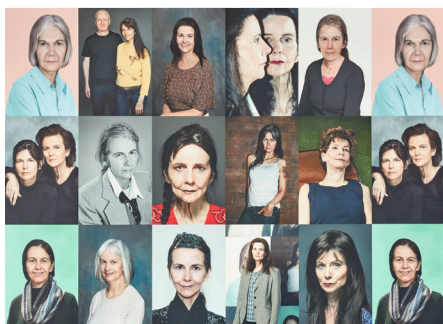
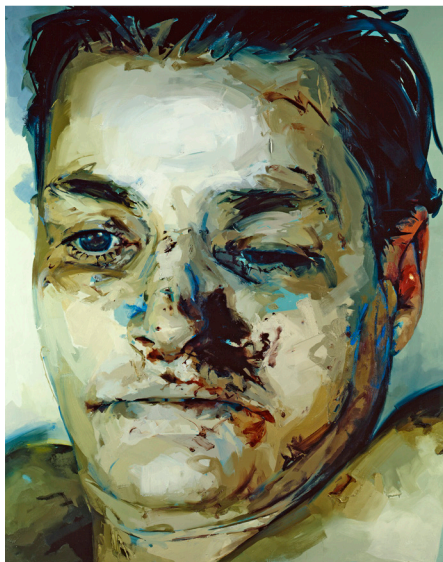


The Sackler Wing of Galleries and Tennant Gallery
11 December 2017 – 11 March 2018



For press information

T 020 7300 5615

E press.office@royalacademy.org.uk

Images available at picselect.com

Clockwise from top left: Jenny Saville, *Entry*, 2004–5. Oil on canvas, 240 x 191 cm © Jenny Saville. Courtesy the artist and Gagosian; Liane Lang, *Casts series* (2006–2007): Ars Equina © Liane Lang; Male torso, 19th century. Plaster cast. 140 x 67 x 60 cm. Photo © Royal Academy of Arts, London; Chantal Joffe, *Self-Portrait with Hand on Hip*, 2016. Oil on board. 201.6 x 90 x 6 cm © Chantal Joffe, courtesy the artist and Victoria Miro, London; Iggy Pop *Life Class* by Jeremy Deller. Organised by the Brooklyn Museum, February 21, 2016. Photo: Elena Olivo, © Brooklyn Museum; Jonathan Yeo, *The Preserving Machine*, 2017 © Jonathan Yeo studio; Image © Gillian Wearing, courtesy Maureen Paley, London; Thomas Rowlandson, *Drawing from Life at the Royal Academy, (Somerset House)* / hand-coloured aquatint by A.C. Pugin and Thomas Rowlandson published in Ackermann's 'Microcosm of London' 1 January 1808. 19.7 x 26 cm. Photo © Royal Academy of Arts, London.