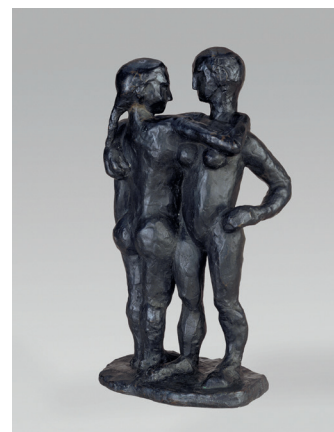


RA

Royal Academy of Arts

Matisse in the Studio

The Sackler Wing of Galleries
5 August – 12 November 2017



For press information

T 020 7300 5615

E press.office@royalacademy.org.uk

Images available at picselect.com

Clockwise from top left: Vase, Andalusia, Spain, early 20th century. Blown glass, 28.5 x 21 cm. Former collection of Henri Matisse. Musée Matisse, Nice. Bequest of Madame Henri Matisse, 1960, 63.2.195. Photo © François Fernandez, Nice; **Henri Matisse**, *Saffron Roses at the Window*, 1925. Oil on canvas, 80 x 65 cm. Private collection. Photo © Private collection. © Succession H. Matisse/DACS 2017; **Muyombo mask**, Pende region, Democratic Republic of the Congo, 19th-early 20th century. Wood, fiber and pigment, 49 x 19.3 cm. Former collection of Henri Matisse. Private collection. Photograph by Jean-Louis Losi; **Henri Matisse**, *The Italian Woman*, 1916. Oil on canvas, 116.7 x 89.5 cm. The Solomon R. Guggenheim Museum, New York. By exchange, 1982, 82.2946. Photo © The Solomon R. Guggenheim Foundation/Art Resources, NY. © Succession H. Matisse/DACS 2017; **Henri Matisse**, *Two Women*, modelled 1907-8, cast 1908. Bronze, 46.6 x 25.6 x 19.9 cm. Hirshhorn Museum and Sculpture Garden, Smithsonian Institution. Gift of Joseph H. Hirshhorn, 1966. Photograph by Lee Stalworth. © Succession H. Matisse/DACS 2017; **Henri Matisse**, *Gourds, Issy-les-Moulineux*, 1915-16. Oil on canvas, 65.1 x 80.9 cm. The Museum of Modern Art, New York. Mrs. Simon Guggenheim Fund, 109.1935. Photo © Archives H. Matisse. © Succession H. Matisse/DACS 2017; **Henri Matisse**, *Still Life with Shell*, 1940. Gouache, coloured pencil, and charcoal on cut paper, and string, pinned to canvas, 83.5 x 115 cm. Private collection. Photo © Private collection. © Succession H. Matisse/DACS 2017; **Unknown**, *Coffee Pot*, France, early 19th century. Silver, handle in wood, 14 x 10.9 x 10.9 cm. Musée Matisse, Nice. Photo © François Fernandez, Nice; **Henri Matisse**, *The Moorish Screen*, 1921. Oil on canvas, 91 x 74 cm. Philadelphia Museum of Art. Bequest of Lisa Norris Elkins, 1950. Photo © Philadelphia Museum of Art/Art Resource, NY. © Succession H. Matisse/DACS 2017; **Jomooni** male and female figures, Bamana region, Mali, 19th-early 20th century. Wood and metal, H. 40.5 cm, H. 43.3 cm. Former collection of Henri Matisse. Private collection. Photograph by Robert Monnier.