



This artwork is in the Lecture Room.
Can you find it? It's called *David Noble Tractus* and it was made by the artist John Humphreys.

What do we call it when artists work together?

To find the answer, hold your sketchbook like this:



Written and designed by Gwen Ramsay and Florence Shaw. Illustrations by Florence Shaw.
© Royal Academy of Arts 2016

Royal Academy of Arts

RA

Sketchbook

Explore the Summer Exhibition 2016.

You will need a pencil.

For ages 6+

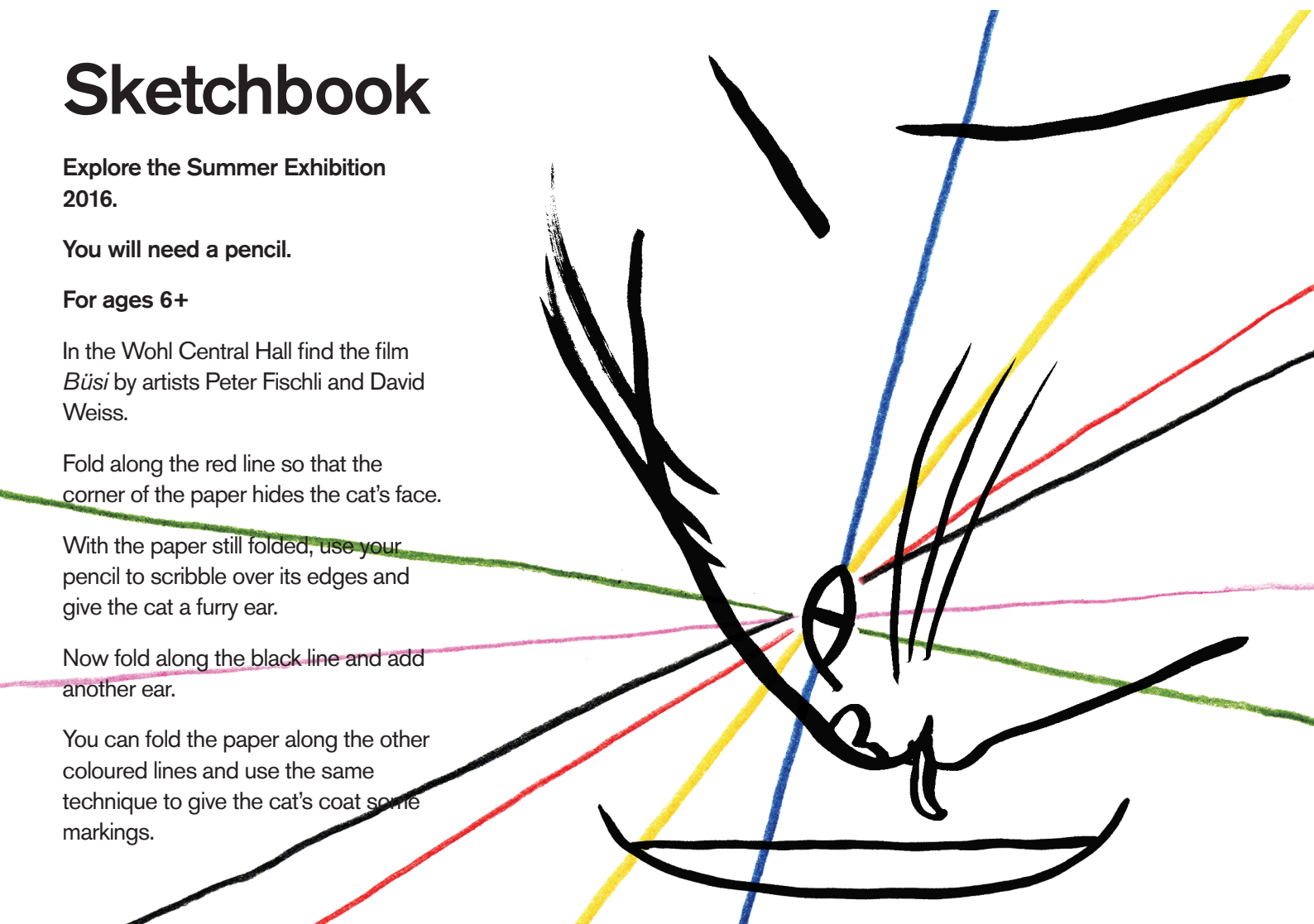
In the Wohl Central Hall find the film *Büsi* by artists Peter Fischli and David Weiss.

Fold along the red line so that the corner of the paper hides the cat's face.

With the paper still folded, use your pencil to scribble over its edges and give the cat a furry ear.

Now fold along the black line and add another ear.

You can fold the paper along the other coloured lines and use the same technique to give the cat's coat some markings.



Find Gallery III

The Royal Academy's Summer Exhibition is the largest open submission contemporary art exhibition in the world, held every year since 1769.

With over 1200 artworks the exhibition is a unique mix of new and established artists all shown together.

A

How many frogs can you see in this room?

B

How many vases can you count?

C

How many furry hats can you find?

Look up and find:

- 36** *When I Grow Up*
by Philip Sutton RA
- 43** *Vitruvian Women* by
Lisa Milroy RA
- 53** *My Granddaughter 'Rivka'*,
also by Philip Sutton RA

The subjects of these paintings will spend all summer together. What do you think they'll talk about? Fill in the speech bubbles with what you think the people in the portraits might say to each other.

In the Lecture Room, can you find the sculpture number 1143 called *The Abandoned Biobot Type 3*? It is by artist duo Michael Burton & Michiko Nitta.

Many of the artworks in this year's Summer Exhibition were made by two artists working together. How can you tell that the Biobot was made by two people?

We have started a drawing of the Biobot. Will you work with us and create a Biobot Type 4 by drawing the faces of the creatures on his cape?

Draw faces onto the three heads on Biobot's cape to complete this artwork.

Are they happy, sad, angry, hairy, sleeping, laughing, wearing a hat, wearing glasses?

Where are their ears?

Do they have long noses, or big mouths with big teeth?



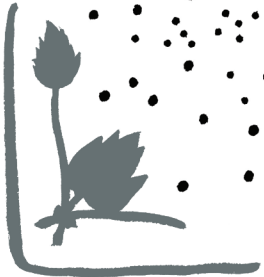
In Gallery VI, find the sculptures by Japanese artist Aono Fumiaki called *Mending, Substitution, Consolidation, Coupling*.

The artist has combined everyday items broken during the Great East Japan earthquake to create new objects.

What do you think these things looked like before they were broken?

Repair the items below by connecting any dots you choose.

You could make the objects look brand new, or change them by adding different shapes to them – circles, squares, triangles, rectangles, or your own invented shapes.



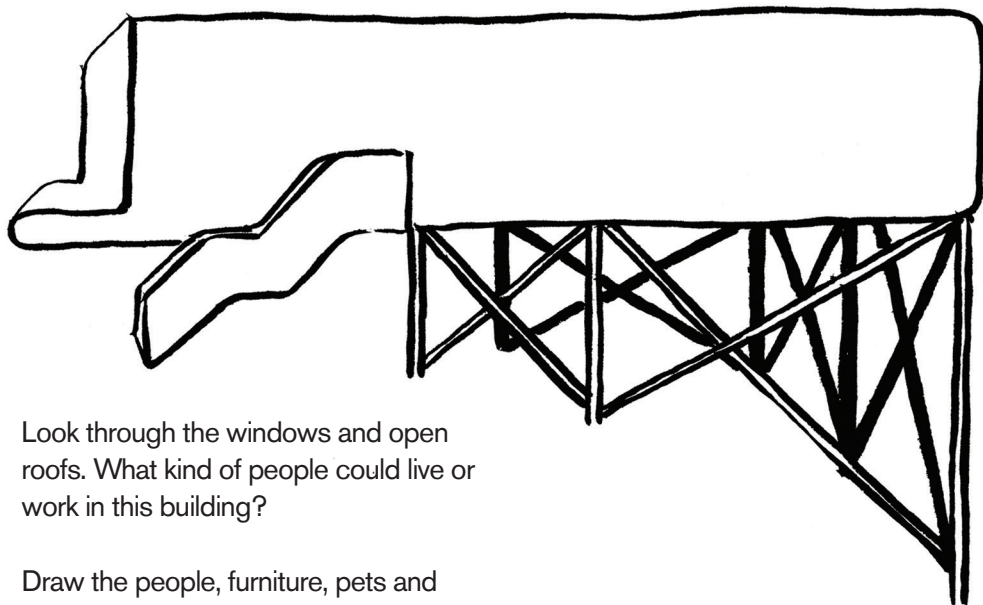
A. two
B. eight
C. one

Go to the Large Weston Room

Pick one and look closely.

There are lots of models made by architects in here. These are models of buildings which have not been built yet.

Can you imagine where in the world this building could be built?



Look through the windows and open roofs. What kind of people could live or work in this building?

Draw the people, furniture, pets and other items that you think you might find there.

Here are some windows to draw inside.

Suburbs
Jungle
Desert
City
Countryside
On the Moon
Mountain Range

