

# RA

Royal Academy of Arts

## Art Detectives

A guide for  
young visitors

Art Detectives are supported  
by the Flow Foundation



Summer  
Exhibition  
2016



You will need  
a pencil to  
write and draw



There is a lot to see, so go and explore!

[illegible]

## Section 2.

### Find Gallery I



Look up. Above your head is number 251, Kutluğ Ataman's digital artwork called *The Portrait of Sakıp Sabancı*

This artwork has over 10,000 LCD panels and took the artist three years to finish!

The artwork is made up thousands of tiny photos. Each one is a person the artist met in his lifetime.

---

---

---

Draw some portraits of people you know in the grid below. They can be people you have met once, or people you see every day.


## Section 3.

### Go through to the Large Weston Room



In this room there are models and drawings of buildings made by different architects. Can you find ...

Architects make models of buildings before they build the real thing. Many of these models were never made into buildings, so some are very imaginative.

- A building that floats?
- A building made of plastic?
- A building in a globe?
- A building made of crystals?
- A building made of tiny red men?

Write down the number of each one when you find it.

Draw your dream house below.

## Section 4.

### Find Gallery IV



In this room there are landscapes  
of places all over the world

List below all the places you can see.

---

---

---

---

Some artworks are a bird's eye view from  
very far away and some seem to be zoomed in.  
Can you find the most zoomed in artwork?  
The most zoomed out?

---

---

---

---

Do you think all the landscapes are on planet Earth?  
Why or why not?

---

---

---

---

## Section 4.

(continued)



Find number 451: India Dewar,  
*Slice of the Multibran Loaf*

This painting is painted using  
oil paints. India Dewar chose  
to paint the landscape on a  
slice of bread!

Why do you think the artist painted on bread?

---

---

---

---

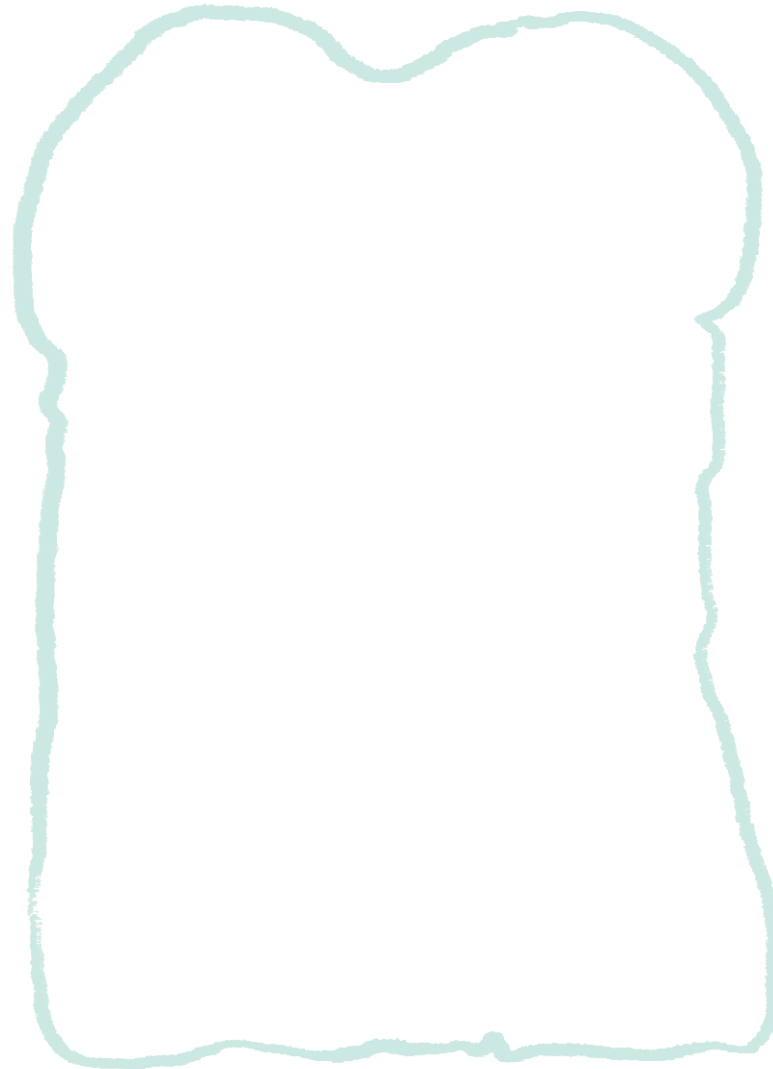
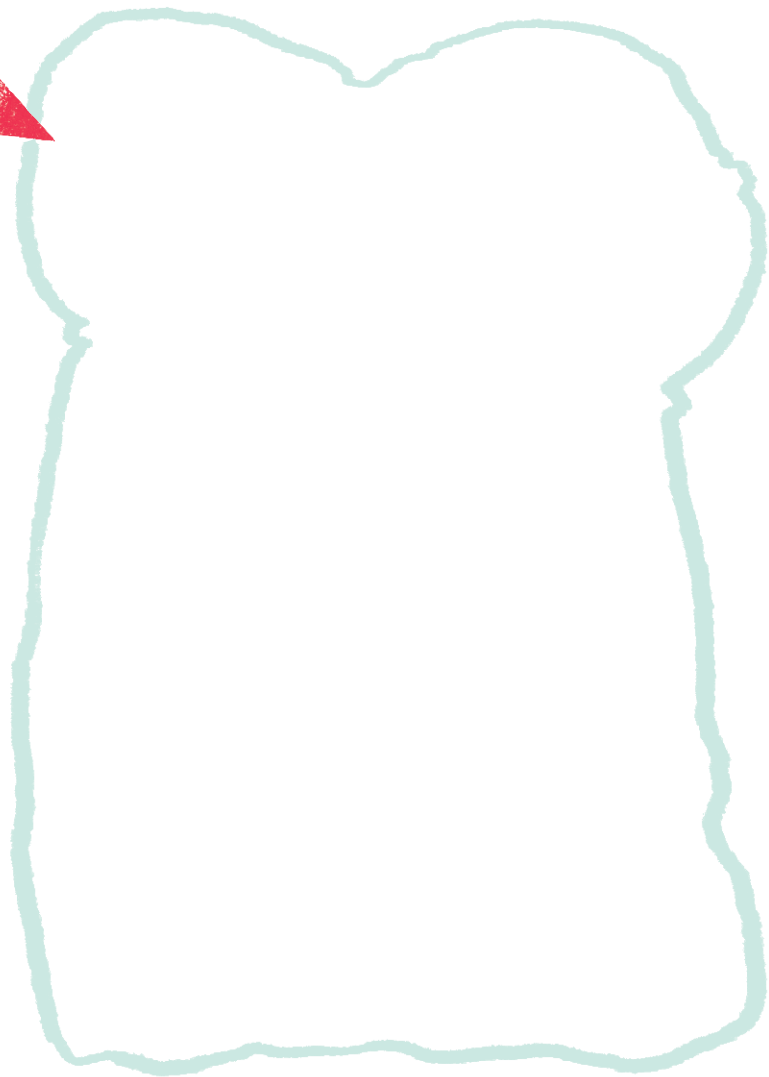
---



## Section 4.

(continued)

Draw, from memory, two landscapes that are local to where you live.



Section 5.

Go into Gallery V



Find number 615: Cathie Pilkington RA,  
*Primal Scene*

Cathie Pilkington RA is a Royal Academician who is a sculptor and painter. When she was younger she was obsessed with making animals out of clay and painting them.

*Primal Scene* is a picture of a tree full of birds. There are lots of different birds throughout the different galleries in the Summer Exhibition.

How many different birds can you find?  
\_\_\_\_\_

Fill in the empty tree below with different birds you saw today in the different artworks.



Section 5.

Go through until you get to Gallery VIII



Find number 948: *The Areoplane*,  
(largest dog) and number 949: *The Aeroplane*, (smaller dog) by Annie Whiles

These two dogs are sitting side by side in one corner of the gallery.

What are the dogs doing? Do you think they are lost?  
\_\_\_\_\_  
\_\_\_\_\_  
\_\_\_\_\_

How would you describe the dogs to help someone find them?

- Do they have name tags?
- What colour are they?
- How are they different?

\_\_\_\_\_  
\_\_\_\_\_  
\_\_\_\_\_  
\_\_\_\_\_  
\_\_\_\_\_  
\_\_\_\_\_

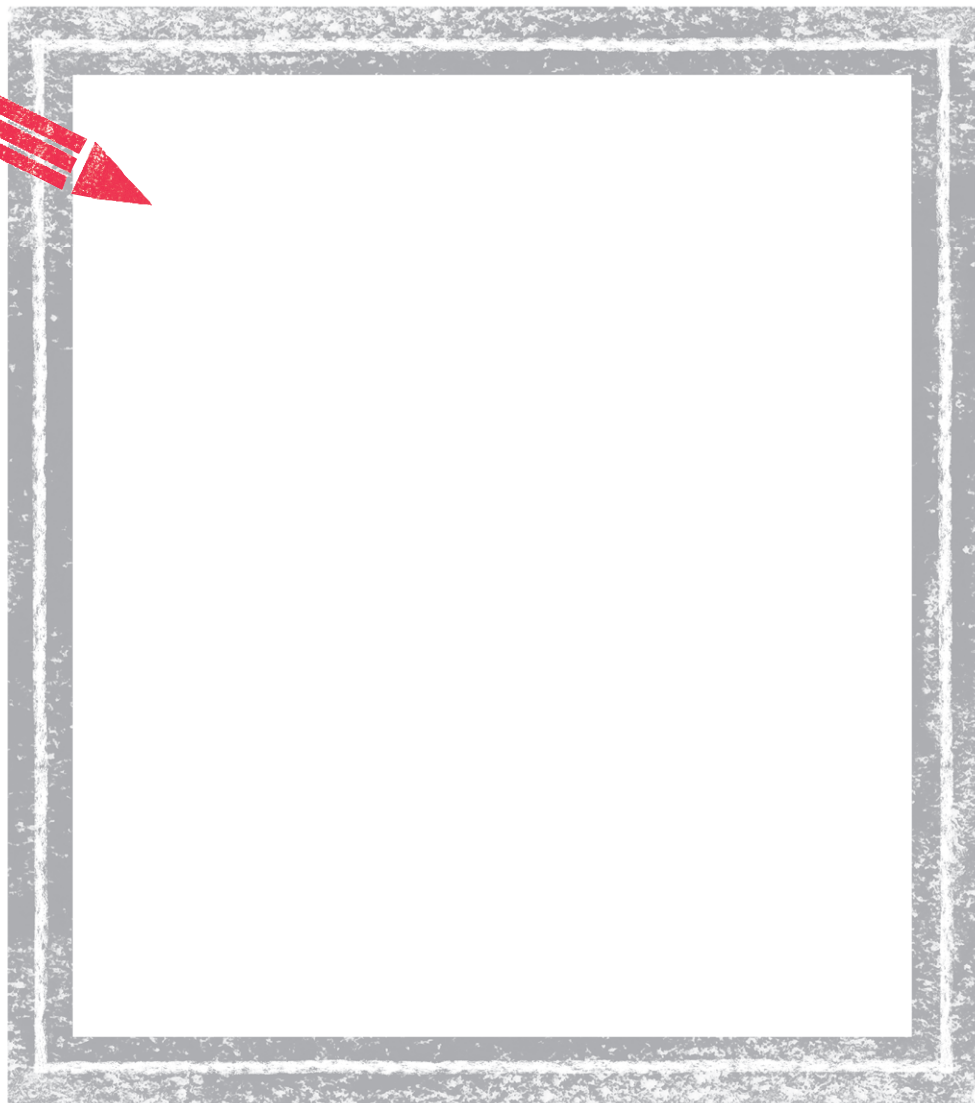




## Section 5.

(continued)

Draw how you think the two dogs  
got into the gallery.



## Section 6.

Go through into Gallery IX

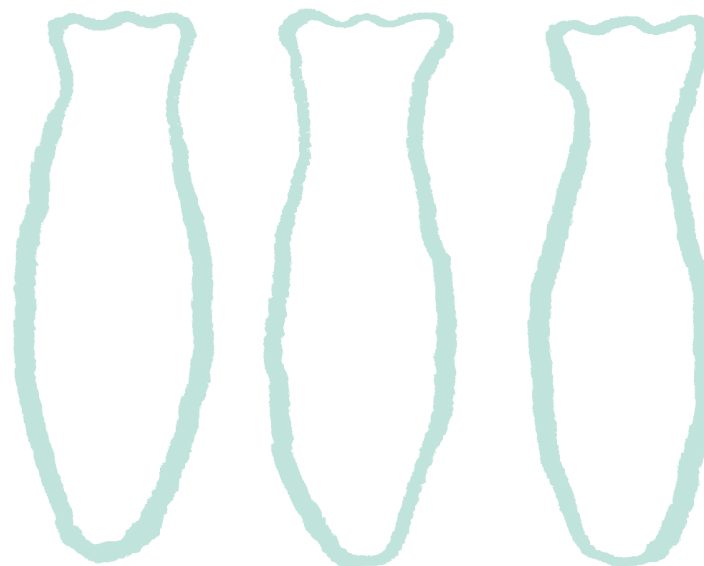


Find number 969: David Mach RA,  
*All the Fish in the Sea*

David Mach RA has been  
making incredible sculptures  
out of unusual materials for  
many years. For example,  
he created a series called  
'Matchheads', made from  
wooden matchsticks.

Look closely at the vases covered in patterns.  
You can see that they look like patterns made up  
of dots. The artist used different coloured pins  
to make the patterns.

Can you draw a pattern on the vases below  
using only dots?



## Section 7.

Turn right into the Lecture Room



The Lecture Room is full of sculptures

Artworks can be made of any materials. What is the weirdest material you can see in this room?

---

---

Why would you not expect to see art made of this?

---

---

---

Circle each of the different materials you can find artworks made of:

fabric      wire      clay  
eggs      marble      beads  
Mr Potato Head  
metalpaint      plastic      net  
copper      coat hangers  
cardboard      paper

## Section 8.

Go back, through to Gallery X



Find numbers 1207 and 1208

The rope behind the woman in number 1207 is called coir and is made from the husks of coconuts.

Number 1207: *Coir Rope worker, Anjalai Devi, Tamil Nadu, India* is by photographer Jillian Edelstein, and number 1208 called *Self Nature* is by artist Dagmara Bugaj.

Compare the two artworks.  
What do you notice about them that is similar?

---

---

---

---

---

---

How are they different?

---

---

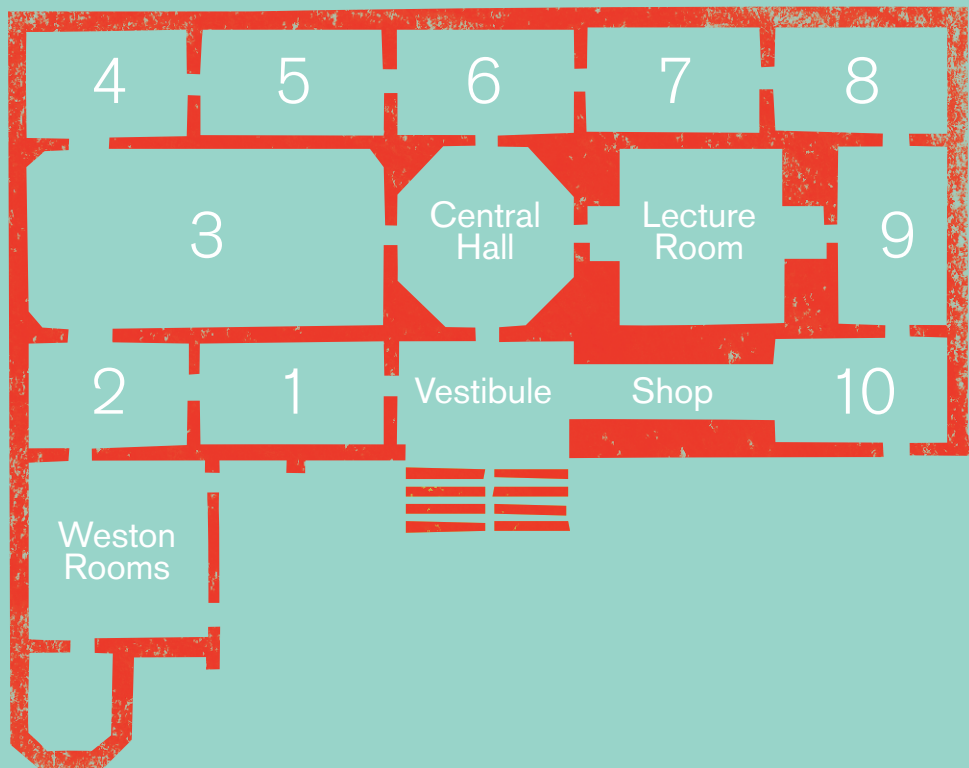
---

---

---

---





© Royal Academy of Arts  
Designed by  
Kathrin Jacobsen

If you would like to see your drawings on the RA website, please hand in your completed Art Detective at the Reception Desk. Alternatively, if you would like to work on your picture at home and send it to us later, you can post it to:

Learning Department  
Royal Academy of Arts  
Burlington House  
London  
WIJ OBD