



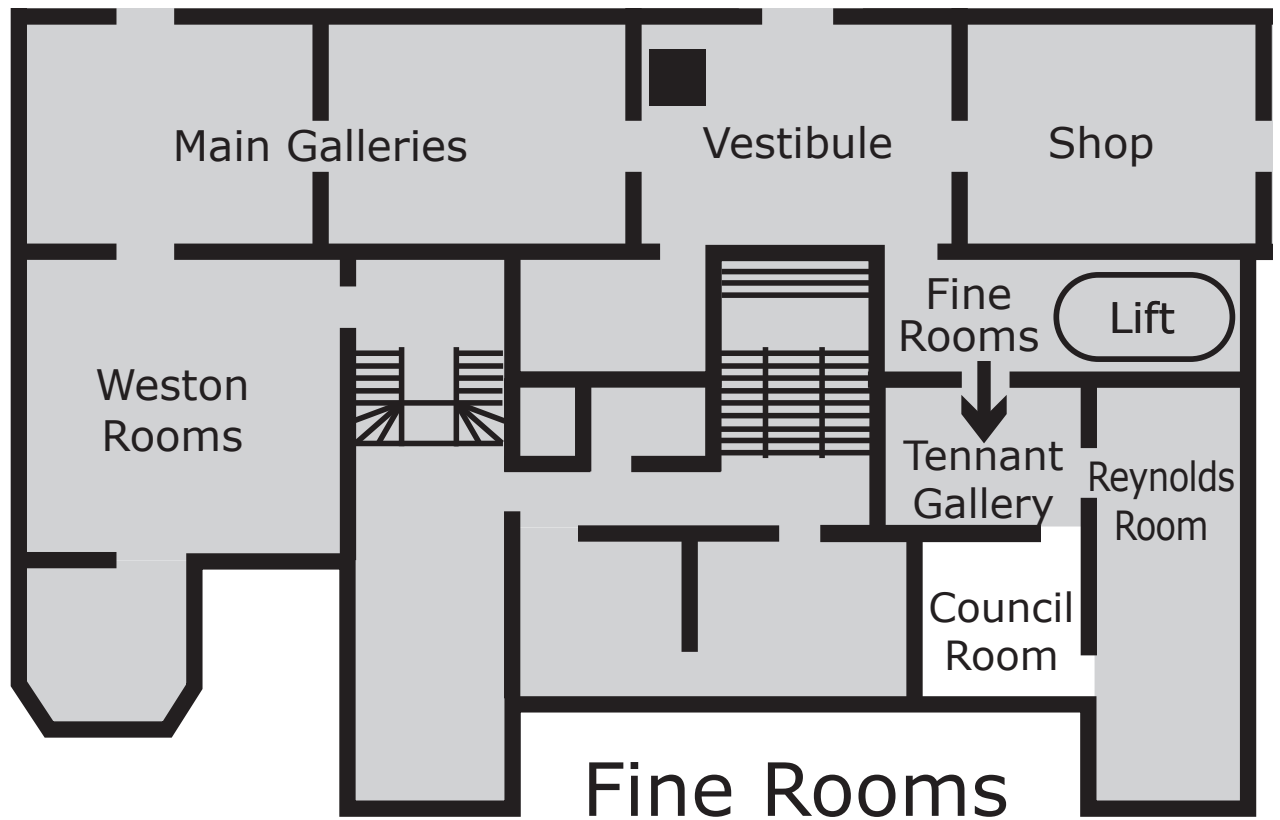
Large  
Print

# **Bill Jacklin RA**

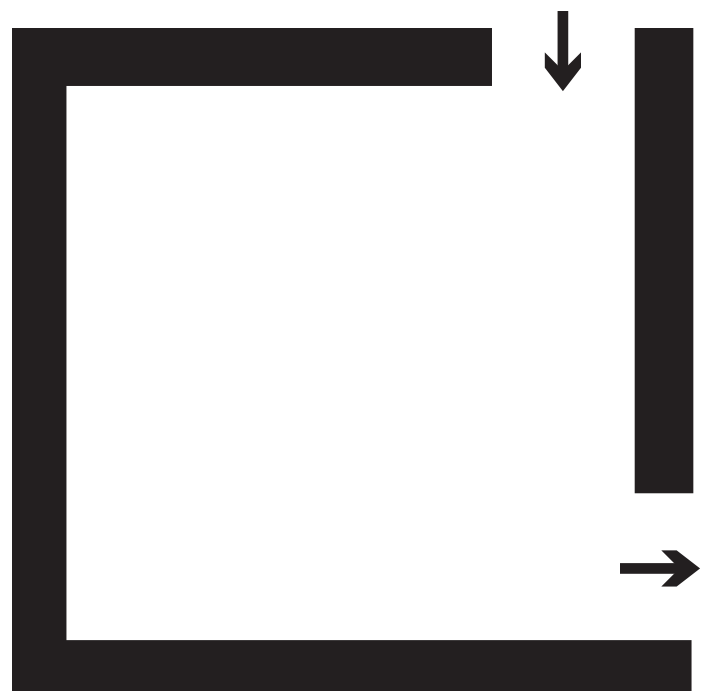
**The Graphic Work 1961-2016**

The Richard Sharp  
Council Room

**Do not remove from gallery**



You are in The Richard Sharp  
Council Room



# **Bill Jacklin RA**

## **The Graphic Work 1961-2016**

The John Madejski Fine Rooms

3 June – 28 August 2016

## **Contents**

### **Page 4**

Introduction to this room

### **Page 6**

List of works

**The production of RA large print  
guides is generously supported by  
Robin Hambro**

# **Introduction to the Richard Sharp Council Room**

## **Coney Island and Hong Kong**

In 1984 Jacklin began the 'Woman in a Chair' series. He experimented with different techniques including etching, lithography and monoprints. He found great freedom in the creation of one-off monoprints, which allowed a more painterly practice in the inking of the plate.

Jacklin left London in 1985 and settled in New York where he found not just a city but a subject.

With that particular vision of an outsider, he was alive to the rhythm of the people, buildings, streets and parks in and around New York, which he described as having "a flowing, pulsating energy".

He also returned to sketching outdoors and in the summer of 1991 spent four months commuting to Coney Island drawing life on the beaches and the piers. In the eight etchings of his 1992 'Coney Island' suite he depicts groups of figures sunbathing or swimming. The real subject, however, is often the rhythmic pattern created by bathers in the sea or the criss-cross struts of the pier.

The 'Hong Kong' suite (1994) of six etchings with aquatint was the result of Jacklin being the official artist-in-residence for the British Council in Hong Kong in 1993. The prints include bird's-eye views of the city in 'Queensway Looking East' with the movement of cars a blur and pedestrians like ants beneath the high-rise buildings.

Jacklin also sought out the particular rituals in the life of the city, which he recorded in works such as 'Snake Shop Hong Kong' and 'Temple I Hong Kong', a quieter, more contemplative scene.

**List of works (clockwise in order of hang)**

# **Hong Kong Suite**

1994

Etching

Snake Shop, Hong Kong

Queensway Looking East

9pm Kowloon from Hong Kong Harbour

Chinese Chess

Temple I

Wanchai and Johnson

Lent by Marlborough Fine Art, London

# **Woman in a Chair**

1984

Lithograph

Collection of the artist

# **Woman in a Chair**

1985

Etching

Collection of the artist

# **Coney Island Suite**

1992

Soft ground etching and aquatint

Girl in Deck Chair

The Benches

Coney Island Incident

The Bar

Bathers I

Bathers II

The Bather

Two Men Talking

Royal Academy of Arts Collection, given by the  
artist, 2004



# **Bathers III**

1992

Soft ground etching and aquatint

Collection of the artist

# **Woman in a Chair**

1984

Monotype

Collection of the artist

# **Woman in a Chair**

1984

Monotype from offset lithograph

Collection of the artist

# Your feedback, please

As we are committed to access for all, we would like your feedback on our large-print provision. Feedback forms are available from the Information Desk on the ground floor.

We also offer one-to-one audio descriptive tours of the exhibitions with trained volunteer audio describers.

Wheelchair users can also benefit from our volunteers, who can assist with taking you around the galleries so you can enjoy our exhibitions at your leisure. With prior notice we can arrange these at a time that fits in with your schedule. Contact me for further information.

Thank you.

Molly Bretton, Access Manager



**InTouch**  **at the RA**

Design & typography by WfS Create: [mail@wfscreate.com](mailto:mail@wfscreate.com)

© Copyright Royal Academy of Arts, London, 2016.