



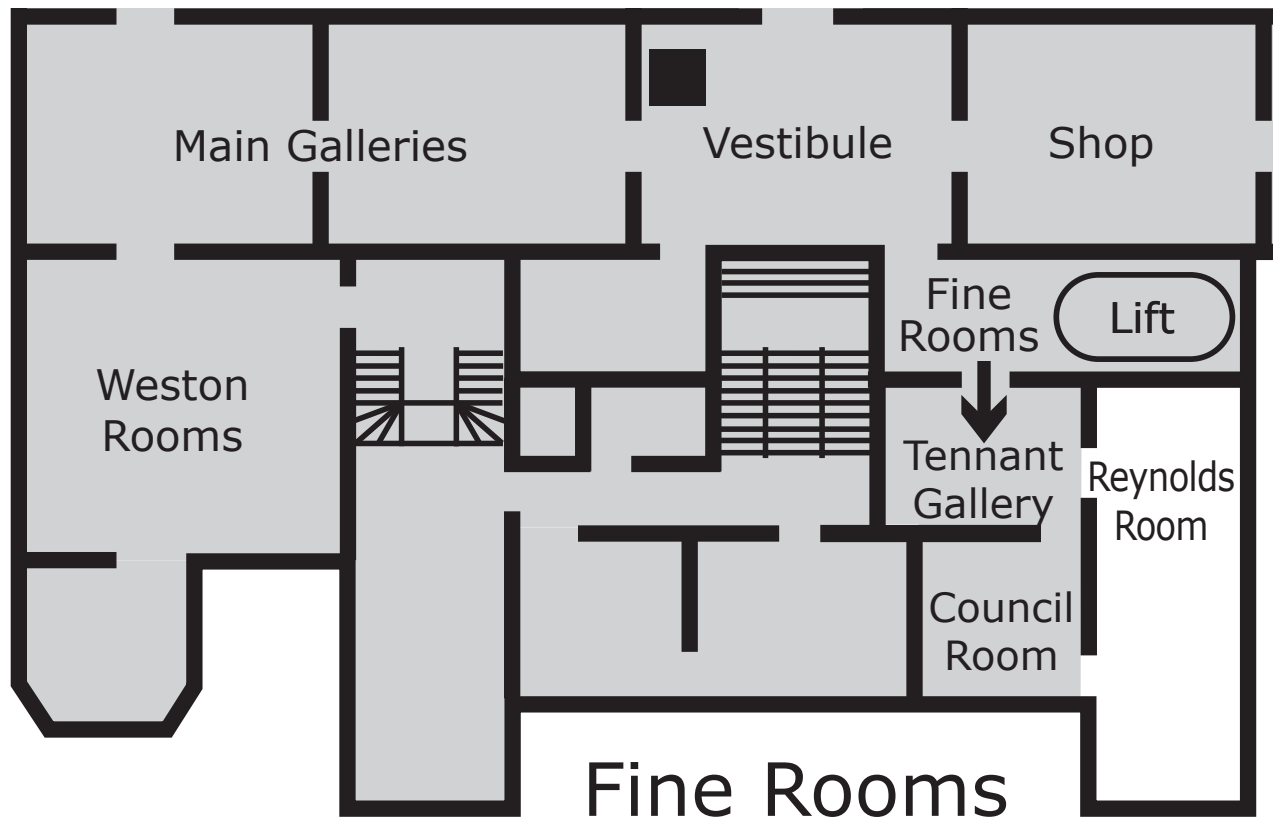
Large
Print

Bill Jacklin RA

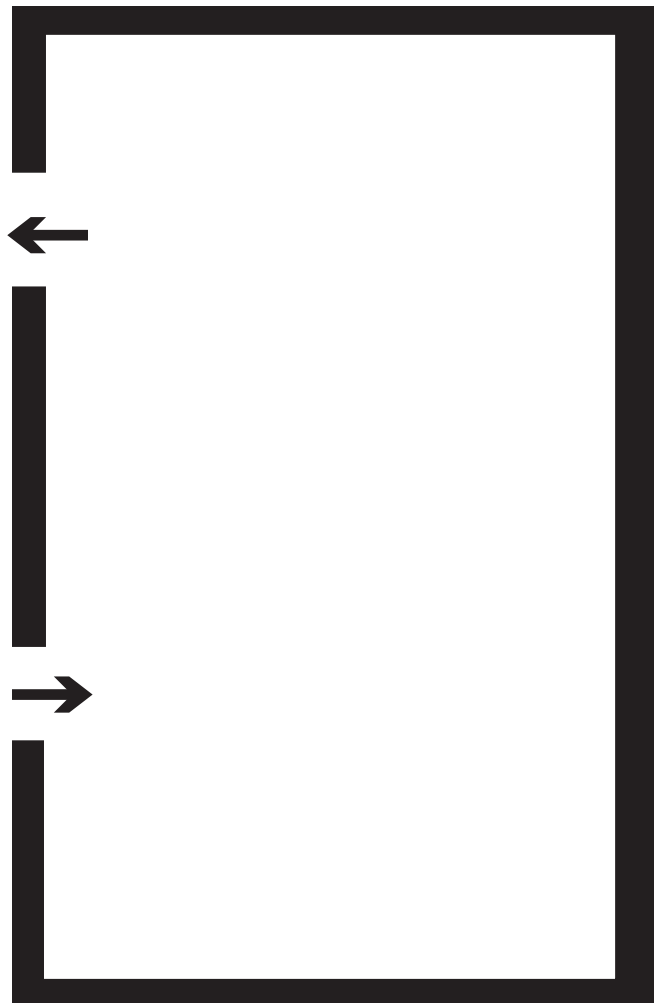
The Graphic Work 1961-2016

The Reynolds Room

Do not remove from gallery



You are in
The Reynolds
Room



Bill Jacklin RA

The Graphic Work 1961-2016

The John Madejski Fine Rooms

3 June – 28 August 2016

Contents

Page 4

Introduction to this room

Page 7

List of works

**The production of RA large print
guides is generously supported by
Robin Hambro**

Introduction to the Reynolds Room

New York and Venice

After Jacklin moved to New York he sketched all round the city and from these sketches made a series of etchings in which he captured intimate portraits of New Yorkers at work such as 'Ironers, W. 36th St I' (1997).

At other times Jacklin rises above the crowds and depicts people swirling around, silhouetted against streaming light from the cathedral-like windows of Grand Central Station.

Jacklin arrived in New York during an unsettled time for the city, marked by violence and conflict between civilians and the police force. In his 'Great Lawn' and 'After the Event' series Jacklin captures the unease and more threatening aspects of crowds in New York.

After the 9/11 attacks of 2001 Jacklin worked on a series of scenes of light-filled avenues in Central Park. There is an ambivalence about these scenes, which initially appear to be tranquil landscapes: the city is always in the background and the shadows cast across the avenue are slightly foreboding.

In 2003 Jacklin spent some time in Venice and worked on a series of monotypes, which embody the sometimes claustrophobic nature of Venice's narrow streets. In other works, Jacklin developed his technique of spraying turpentine or oil onto the plate to create spots of light that enhance the effect of the slightly choppy waters of the lagoon.

Scenes of ice skaters are a recurring theme in Jacklin's work. The view from a distant perspective of skaters shown as dark forms against the bright ice and light allows Jacklin to create figurative forms through the suggestion of gestures and poses, but also to explore, as he has stated, "the flow of geometry".

In more recent years Jacklin has worked with monotypes in an increasingly painterly way, which has been particularly effective when capturing different times of day and various weather conditions. The poetic, moonlit scenes in the 'Stars and Sea at Night' series are a masterclass in the depiction of effervescent atmospheric effects.

List of works (clockwise in order of hang)

Afternoon Skaters

1998

Etching

Lent by Marlborough Fine Art, London

Skaters I-IV

1998

Etching

Lent by Marlborough Fine Art, London

Rink I

1995

Rink II

1995

Coloured carborundum

Collection of the artist

Towards Battersea Bridge VII

2006

Monotype

Collection of the artist

Man Eating

1998

Etching

Collection of the artist

Onlookers

1998

Etching

Collection of the artist

Towards Battersea Bridge I

2008

Hand-coloured etching

Lent by Marlborough Fine Art, London

Ironers, W. 36th St I

1997

Etching

Collection of the artist

Woman on a Bench

1998

Etching

Collection of the artist

Encounter, Central Park

2004

Linocut

Lent by Marlborough Fine Art, London

Man with Pig, Central Park

2004

Coloured etching

Lent by Marlborough Fine Art, London

Literature Walk Central Park 5

2005

Monotype

Lent by Marlborough Fine Art, London

Clouds and Sky I

2015

Monotype

Collection of the artist

Reflection VII

2001

Monotype

Lent by Marlborough Fine Art, London

Stars and Sea at Night V

2015

Monotype

Lent by Marlborough Fine Art, London

Early One Morning NYC VII

2007

Monotype

Lent by Marlborough Fine Art, London

New York Harbour I

2003

Monotype

Lent by Marlborough Fine Art, London

Road with Shadows I

2012

Monotype

Lent by Marlborough Fine Art, London

Towards the Event, Great Lawn

2000

Etching

Lent by Marlborough Fine Art, London

Great Lawn Event II

2000

Monotype

Collection of the artist

Sun and Clouds over Broadway II

2003

Monotype

Lent by Marlborough Fine Art, London

After the Event I

2000

Etching

Collection of the artist

After the Meeting, Great Lawn

2000

Monotype

Collection of the artist

Fifth Avenue V

2001

Monotype

Lent by Marlborough Fine Art, London

The Red Umbrella

2007

Etching

Lent by Marlborough Fine Art, London

Snow at Night I

2012

Monotype

Lent by Marlborough Fine Art, London

Twirling and Swirling I

2012

Monotype

Lent by Marlborough Fine Art, London

Tempest in the Square XI

2016

Monotype

Lent by Marlborough Fine Art, London

Stars and Sea at Night XIII

2016

Monotype

Lent by Marlborough Fine Art, London

Into the Storm III

2013

Monotype

Lent by Marlborough Fine Art, London

Crossing the Square in the Snow VI

2009

Monotype

Collection of the artist

Into the Sea at Night II

2009

Pastel on monotype

Collection of the artist

Lake V

2005

Monotype

Lent by Marlborough Fine Art, London

Verso il Mare II

2004

Monotype

Collection of the artist

Ponte degli Ombrelli

2004

Hand-coloured etching

Lent by Marlborough Fine Art, London

Verso al Luce XIV

2003

Monotype

Lent by Marlborough Fine Art, London

Chiesa II

2003

Monotype

Lent by Marlborough Fine Art, London

Lucky Strike, Grand Central I

2007

Monotype

Lent by Marlborough Fine Art, London

Chance Encounter, Grand Central I

2006

Monotype

Lent by Marlborough Fine Art, London

Gridlock I

2008

Etching

Lent by Marlborough Fine Art, London

Incident Grand Central

1998

Etching

Lent by Marlborough Fine Art, London

Wollman Rink II

2011

Inkjet print

Lent by Marlborough Fine Art, London

Publication

'Bill Jacklin: Graphics', featuring an introduction by Jill Lloyd and an essay by Nancy Campbell, is published by the Royal Academy of Arts and is available online at shop.royalacademy.org.uk and from the RA Shop in hardcover priced at £29.95 (£26.95 to readers of RA Magazine).

A special edition of 'Bill Jacklin: Graphics' including a signed limited edition print of 'The Rink' (2016) is available from the RA Shop, priced at £600.

Your feedback, please

As we are committed to access for all, we would like your feedback on our large-print provision. Feedback forms are available from the Information Desk on the ground floor.

We also offer one-to-one audio descriptive tours of the exhibitions with trained volunteer audio describers.

Wheelchair users can also benefit from our volunteers, who can assist with taking you around the galleries so you can enjoy our exhibitions at your leisure. With prior notice we can arrange these at a time that fits in with your schedule. Contact me for further information.

Thank you.

Molly Bretton, Access Manager



InTouch  **at the RA**

Design & typography by WfS Create: mail@wfscreate.com

© Copyright Royal Academy of Arts, London, 2016.