

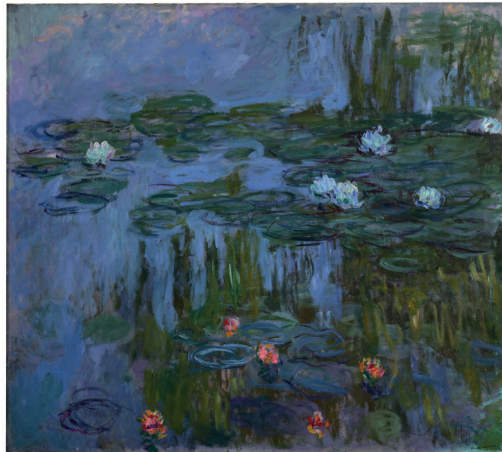
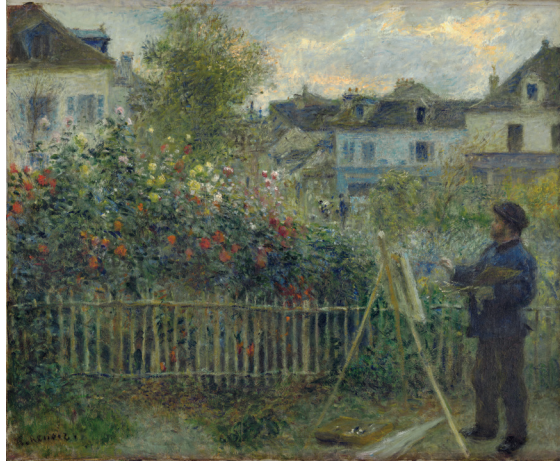
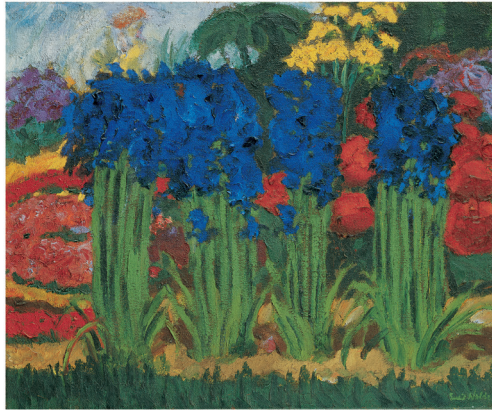
RA

Royal Academy of Arts

Painting the Modern Garden

Monet to Matisse

Main Galleries
30 January – 20 April 2016



For press information

T 020 7300 5615

E press.office@royalacademy.org.uk

Images available at picselect.com

Sponsored by



BNY MELLON

Partner of the Royal Academy of Arts

Clockwise from top left: Emil Nolde, *Flower Garden (O)*, 1922. Oil on canvas, 74 x 89.5 cm. Nolde Stiftung Seebüll. © Nolde Stiftung Seebüll; Pierre Bonnard, *Resting in the Garden (Sieste au jardin)*, 1914. The National Museum of Art, Architecture and Design, Oslo. Photo © Nasjonalmuseet for kunst, arkitektur og design/The National Museum of Art, Architecture and Design / © ADAGR; Paris and DACS, London 2015; Wassily Kandinsky, *Murnau The Garden II*, 1910. Oil on cardboard, 67 x 51 cm. Merzbacher Kunststiftung. Photo © Merzbacher Kunststiftung; Henri Matisse, *The Rose Marble Table*, Issy-les-Moulineaux, spring-summer 1917. Oil on canvas, 146 x 97 cm. The Museum of Modern Art, New York. Mrs. Simon Guggenheim Fund, 1956. Photo © 2015. Digital image, The Museum of Modern Art, New York/Scala, Florence / © Succession H. Matisse/ DACS 2015; Claude Monet, *Nymphéas (Waterlilies)*, 1914-15. Oil on canvas, 160.7 x 180.3 cm. Portland Art Museum, Oregon. Museum Purchase: Helen Thurston Ayer Fund, 59.16. Photo © Portland Art Museum, Portland, Oregon; Joaquín Sorolla, *Louis Comfort Tiffany*, 1911. Oil on canvas, 150 x 225.5 cm. On loan from the Hispanic Society of America, New York, NY. Photo © Courtesy of The Hispanic Society of America, New York; Claude Monet, *Lady in the Garden*, 1867. Oil on canvas, 80 x 99 cm. The State Hermitage Museum, St. Petersburg. Photo © The State Hermitage Museum. Photography: Vladimir Terebinin; Auguste Renoir, *Monet Painting in His Garden at Argenteuil*, 1873. Oil on canvas, 46.7 x 59.7 cm. Wadsworth Atheneum Museum of Art, Hartford, CT. Bequest of Anne Parrish Titzell, 1957/614. Photo © Wadsworth Atheneum Museum of Art, Hartford, CT