

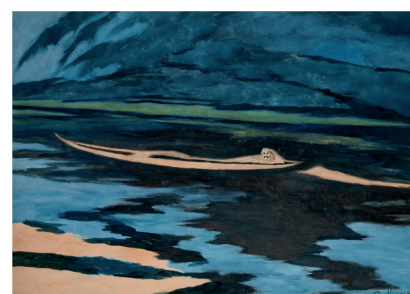
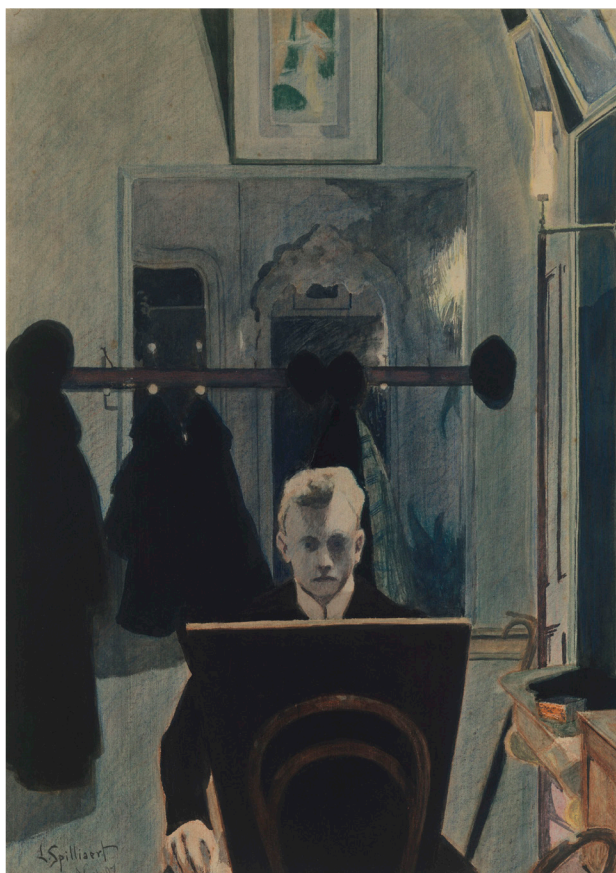
RA

Royal Academy of Arts

Léon Spilliaert

The Jillian and Arthur M. Sackler Wing of Galleries

23 February – 25 May 2020



For press information

020 7300 5615

press.office@royalacademy.org.uk

Images available at picselect.com

Supported by



All works by Léon Spilliaert

Clockwise from top left: *A Gust of Wind*, 1904. Indian ink wash, brush, watercolour and gouache on paper, 51 x 41 cm. Mu.ZEE © www.jukasweb.be - Art in Flanders vzw. Photo: Hugo Maertens; *Self-portrait*, 1907. Gouache, watercolour and coloured pencil on paper, 52.7 x 37.8 cm. Metropolitan Museum of Art © 2019. Image copyright The Metropolitan Museum of Art/Art Resource/Scala, Florence; *The Absinthe Drinker*, 1907. Indian ink, gouache, watercolour and coloured chalk on paper, 105 x 77 cm. Collection King Baudouin Foundation, entrusted to the Fine Arts Museum of Ghent, Belgium, © Studio Philippe de Formanoir; *The Shipwrecked*, 1926. Watercolour, gouache, Indian ink and pen on paper, 54.2 x 75.3 cm. Private collection. Photo: Luc Schrobiltgen; *Woman at the Shoreline*, 1910. Indian ink, coloured pencil and pastel on paper, 49 x 60 cm. Private collection. Photo: © Cedric Verhelst; *Dike at night. Reflected lights*, 1908. Indian ink wash, pen and coloured pencil on paper, 48 x 39.4 cm. Musée d'Orsay. Photo: © Musée d'Orsay, Dist. RMN-Grand Palais / Patrice Schmidt; *Young Woman on a Stool*, 1909. Indian ink, pen, coloured pencil, colored chalk and gouache on paper, 70.3 x 59.9 cm. The Hearn Family Trust; *Beech Trunks. Shadows*, 1945. Pencil, watercolour, Indian ink, pen on paper, 58.5 x 48 cm. Private collection. Photo: © Cedric Verhelst