

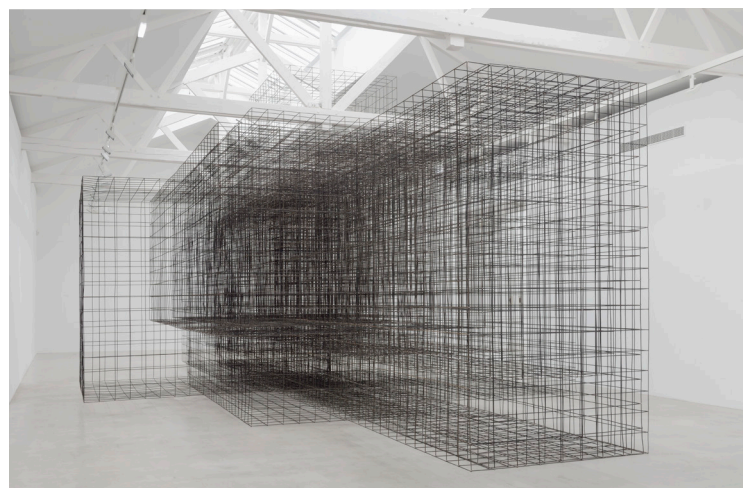
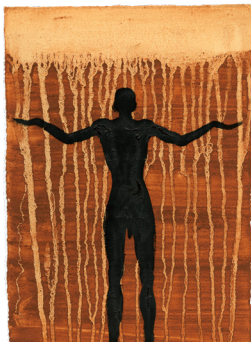
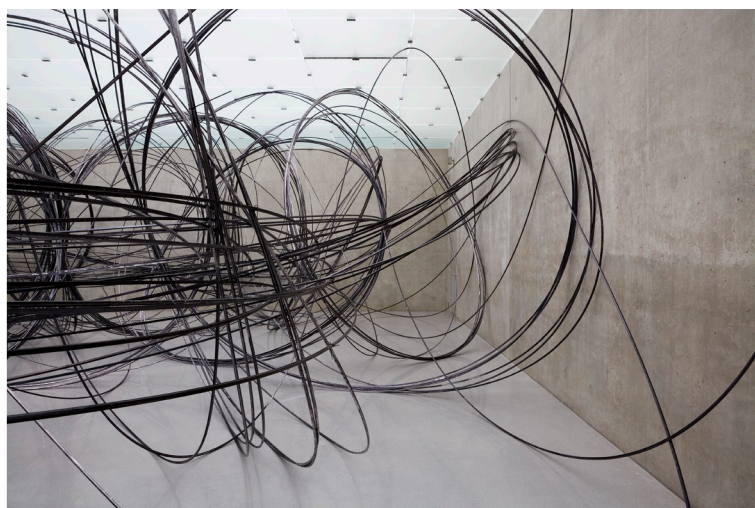
RA

Royal Academy of Arts

Antony Gormley

Main Galleries

21 September – 3 December 2019



For press information

020 7300 5615 | press.office@royalacademy.org.uk

Images available at picselect.com

Lead Supporter



BNP PARIBAS

The bank for a changing world

All works by Antony Gormley

Clockwise from top left: *Lost Horizon I*, 2008 (detail). Cast iron, each element 189 x 53 x 29 cm. Installation view, White Cube, Mason's Yard, London, England. Courtesy of the Artist and PinchukArtCentre (Kiev, Ukraine) © the Artist. Photo: Stephen White, London; *Body and Fruit*, 1991/93. Cast iron and air, dimensions variable. Installation view, Malmö Konsthall, Malmö, Sweden © the Artist. Photo: Jan Uvelius, Malmö; *Flesh*, 1990. Concrete, 36 x 198 x 174 cm. Duerckheim Collection © the Artist. Photo: David Ward, London; *Double Moment*, 1987. Black pigment, linseed oil and charcoal on paper, 38 x 28 cm © the Artist; *Matrix II*, 2014. 6 mm mild steel reinforcing mesh, 550 x 750 x 1500 cm. Installation view, Galerie Thaddaeus Ropac, Pantin, France © the Artist. Photo: Charles Duprat, Paris; *Earth, Body, Light*, 1989. Earth, rabbit skin glue and black pigment on paper, 38 x 28 cm © the Artist; *Mould*, 1981. Black pigment, linseed oil and charcoal on paper, 60 x 84 cm © the Artist; *Clearing V*, 2009. Approximately 11 km of 12.7 mm aluminium tube. Installation view, Kunsthau Bregenz, Austria © the Artist. Photo: Markus Tretter; *Full Bowl*, 1977-8. Lead, 6 x 17 x 17 cm. Private Collection, Vienna © the Artist. Photo: Stephen White, London