

# RA

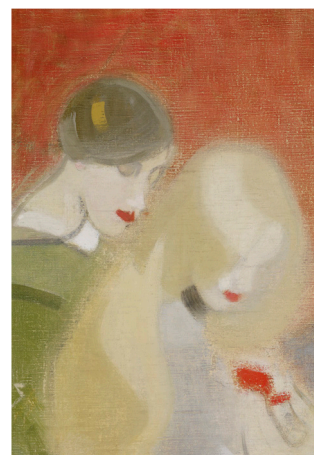
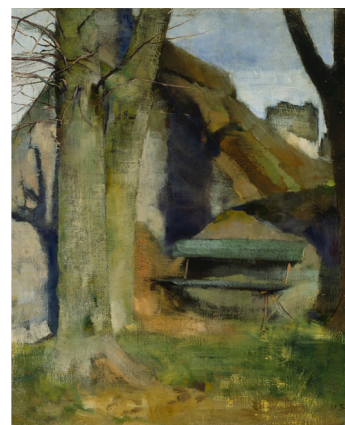
Royal Academy of Arts

# Helene Schjerfbeck

The Gabrielle Jungels-Winkler Galleries

20 July – 27 October 2019

Exhibition organised by the Royal Academy of Arts, London and the Ateneum Art Museum / Finnish National Gallery, Helsinki.



## For press information

020 7300 5615

[press.office@royalacademy.org.uk](mailto:press.office@royalacademy.org.uk)

Images available at [picselect.com](http://picselect.com)

#HeleneSchjerfbeck

## All works by Helene Schjerfbeck

Clockwise from top left: *Self-portrait*, 1884-85. Oil on canvas, 50 x 41 cm. Friends of Ateneum Collection. Finnish National Gallery / Ateneum Art Museum; photo: Hannu Aaltonen; *The Convalescent*, 1888. Oil on canvas, 92 x 107 cm. Finnish National Gallery / Ateneum Art Museum; photo: Yehia Eweis; *Shadow on the Wall (Breton Landscape)*, 1883. Oil on canvas mounted on wood, 45 x 38 cm. Niemistö Collection; photo: Finnish National Gallery / Hannu Aaltonen; *Girl from Eydtkuhne II*, 1927. Oil on canvas, 70 x 54.5 cm. Yrjö and Nanny Kaunisto Collection. Finnish National Gallery / Ateneum Art Museum; photo: Hannu Aaltonen; *The Family Heirloom*, 1915-16. Oil on canvas, 63 x 44.5 cm. August and Lydia Keirkner Fine Arts Collection. Finnish National Gallery / Ateneum Art Museum; photo: Yehia Eweis; *Still Life with Blackening Apples*, 1944. Oil on canvas, 46 x 51 cm. Didrichsen Art Museum; photo: Jussi Pakkala; *Self-portrait with Red Spot*, 1944. Oil on canvas, 45 x 37 cm. Gösta and Bertha Stenman Donation. Finnish National Gallery / Ateneum Art Museum; photo: Hannu Aaltonen; *Self-portrait, Black Background*, 1915. Oil on canvas, 45.5 x 36 cm. Herman and Elisabeth Hallonblad Collection. Finnish National Gallery / Ateneum Art Museum; photo: Yehia Eweis; *My Mother*, 1909. Oil on canvas, 81 x 83 cm. Private collection; photo: Finnish National Gallery / Yehia Eweis