

RA

Royal Academy of Arts

Art Detectives

A guide for
young visitors

How to be
an artist
**The RA
Collection**

Art Detectives
are supported
by the Flow
Foundation

Welcome to the RA!

Download
the Smartify app
to “scan” the artworks
you see in this gallery
today and discover
more stories
behind them.

My name is Angelica
Kauffman! Welcome to
the RA. See if you can spot
me in the gallery today.

The RA was set up 250
years ago. A changing
group of artists and
architects called Royal
Academicians (or “RAs”
for short) have been in
charge ever since.

Who in your family likes to make art?
An artist can be someone who likes to
paint, draw, make sculptures, make videos,
sketch, doodle, dress up, make outfits, do
performances or anything else creative!

Anyone can be an artist.

My name is

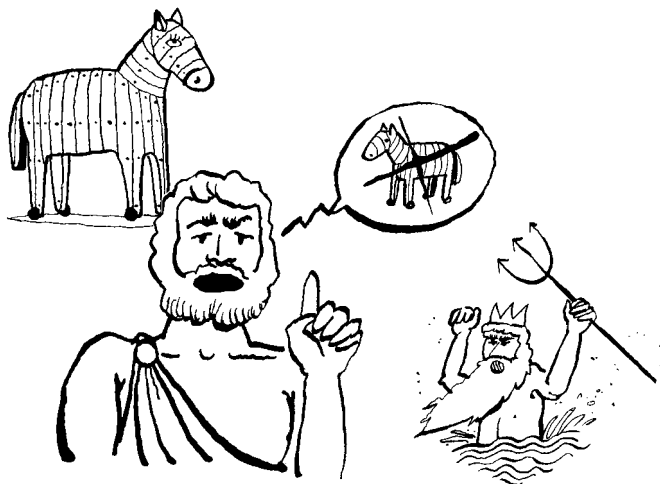
I am an artist!





In an ancient Greek story, a priest called Laocoön warned the Trojans against bringing a very big wooden horse into their city. The Trojans did not know that Greek soldiers were hidden in the horse.

Laocoön's warning made the god of the sea, Poseidon, very angry, and he sent sea serpents to attack Laocoön and his sons.



Find the sculpture covered in snakes!
Walk around it to find the heads and tails of the snakes.

How would you describe the snakes?

wriggling angry happy
funny still
straight wobbly curvy



Two hundred years ago, at the RA's art school, students learned how to draw by drawing sculptures like this one.

Once they had learned to draw from sculptures, they would be allowed to draw real people.

How far do you think you would get if you laid out all of these snakes in a long line?

Add your own snakes to the statue.



Find a painting with snakes or dragons in it and make up a story all about it with your family.



When the RA was set up there were no museums or galleries, no photographs and no internet.

A lot of the paintings and sculptures you will see today were bought by the RA to teach the students about the great art of the past.

Find a sculpture of a floating chest without a head, any arms or legs.

The Belvedere Torso is a copy of an ancient sculpture from over 2,000 years ago.

What do you think he would look like with arms and legs and a head?
Draw them in!

Can you spot this sculpture anywhere else in this room?
Try to count how many times you see it today.



RA Collections Gallery

About Casts and Moulds



What is a cast?

The casts you see today are copies of sculptures from ancient Greece and Rome.

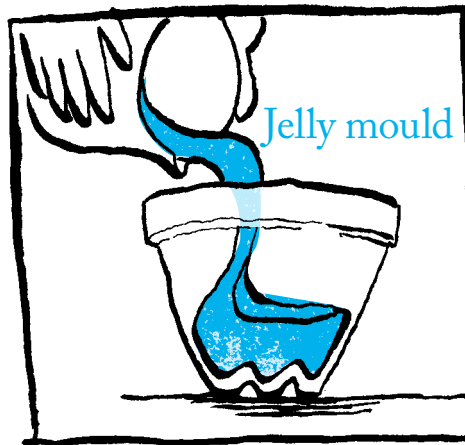
How do you make a cast?

To make a cast, an artist makes a hollow mould from a sculpture. They fill the mould with a liquid called plaster which hardens. The cast that comes from the mould is a copy of the original sculpture.

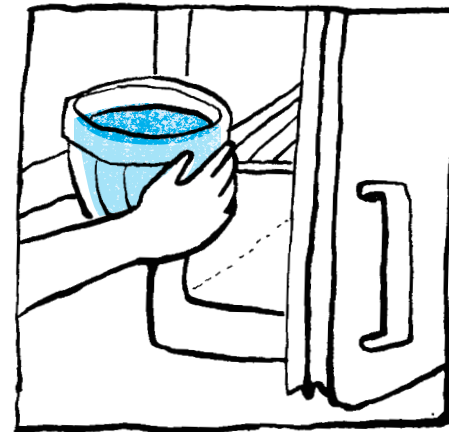
Making a cast is a bit like making a jelly!



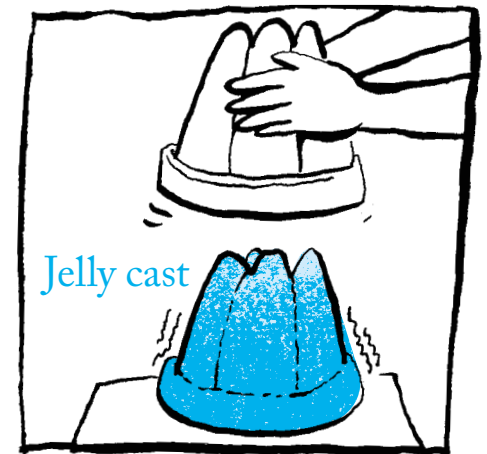
When you make a jelly you use a mould and a cast.



If you want to make a round jelly, you use a round mould.



Then you pour in the liquid jelly and put it into the fridge to harden.



Your jelly is the shape of the mould. It is your cast.



This is my painting.
I was one of the artists
that helped start the
Royal Academy.

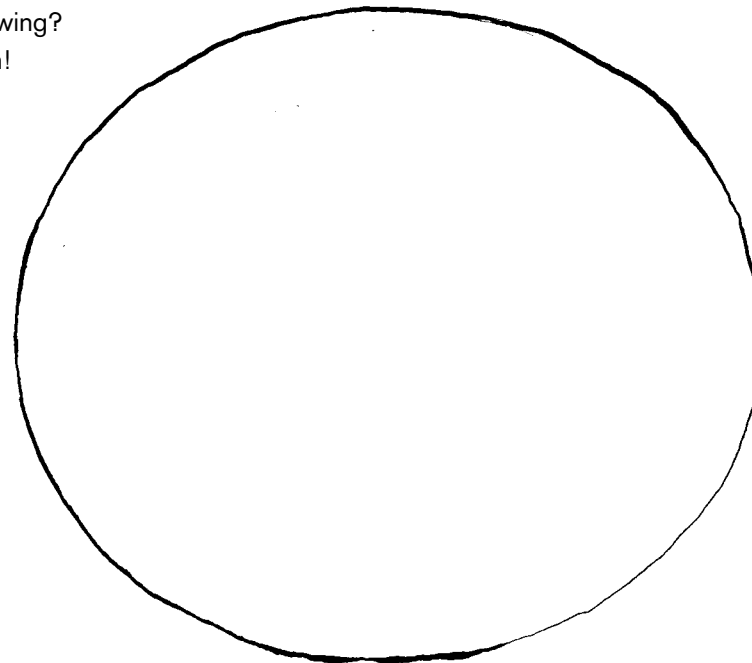
When I painted this
more than 200 years ago,
women were not allowed
to draw men in real life.
We drew sculptures of
men's bodies instead.

This painting is called *Design*. I have painted
a woman artist hard at work drawing.
By the time I was twelve years old I was
making portraits for important people.

What work would you like to do when you grow up?
Use the blank canvas to sketch a drawing of yourself
doing that job. What objects would you include?

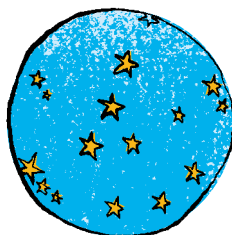


What else could
I be drawing?
Add it in!

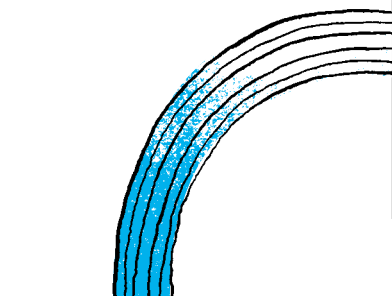


I made three more round paintings. They are on the
ceiling of the Front Hall in Burlington House.

When you see them, look for
...a rainbow
...a chameleon
...a globe covered in stars



What shapes are most of the
other paintings you have seen today?





Find a painting where you can see a lot of artists in one room.

This painting was painted over 200 years ago. Look carefully. Some of the artworks from this room are hidden in the painting!

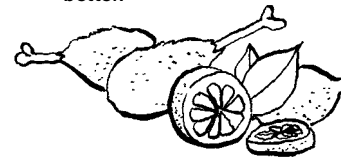
How many can you spot?



This is a copy of a very famous painting by Leonardo da Vinci.

The original painting has worn away because it was painted on a wall using a paint that didn't last very well at all.

This version is painted with oil paint on canvas, so it has lasted much better.



Find the longest painting in the room!

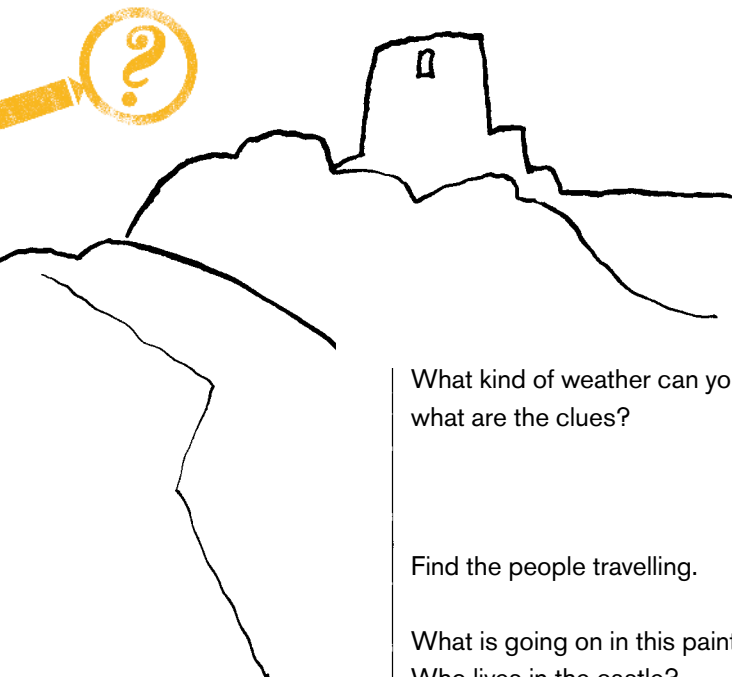
The people here are having dinner together. What different foods can you see? What do you think they will have for dessert?



How many people can you see in this painting?
How many feet can you count? Is it the right number?

Draw your own feast! What will you eat?
Draw your guests and their dinner.

How do you think you move big paintings like *The Last Supper* in and out of the gallery?



What kind of weather can you see in this painting – what are the clues?

Find the people travelling.

What is going on in this painting?

Who lives in the castle?

Are the people going there?

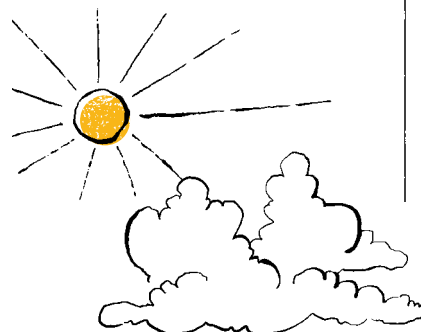
Make up your own story.



Draw what might
be in their bag
for their journey.



John Constable painted
these scenes of the
countryside in England.
Clouds can tell us a lot
about the weather.



Find a wall of cloud paintings.

Find a sky where it looks...

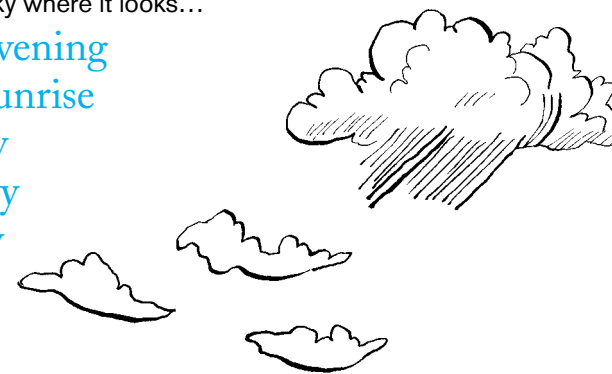
like evening

like sunrise

windy

stormy

sunny



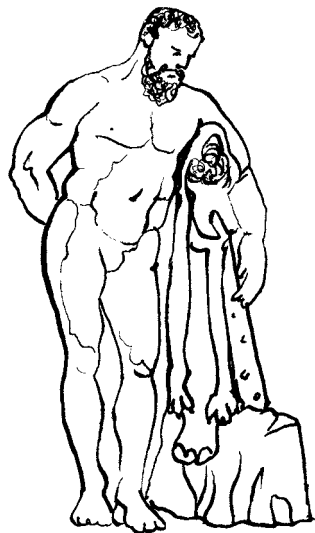
What shapes can you see in the clouds?

When you leave the gallery, sketch some
cloud shapes you can see in the sky!

01

The Vaults Hercules

?



Find a giant!

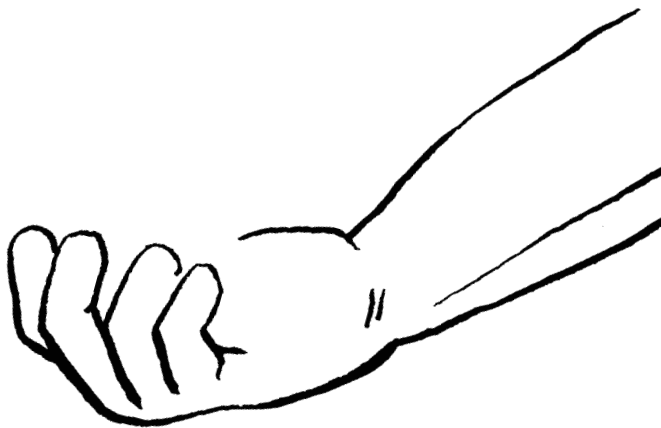
This is a cast of an ancient sculpture of Hercules.
He's a mythical warrior from Ancient Greece.

Circle which words you would use to describe him

brave scared tall
bored sleepy
big small

Or _____

What is he hiding in his hand?
Draw it here.



Find the lion's skin. Hercules had to complete
12 very hard tasks and one was killing a fierce lion.
How did he fight the lion?

?

02

The Vaults Standing Woman Arms Folded

?



Find a sculpture made of words.

What do you see?

Compare this sculpture to the one next to it.
How are they the same? How are they different?

Why do you think the artist chose to use words
instead of showing a person?

Think about a sculpture you would like to make
using words. You could use your name,
or make a sentence.

Map of the New RA

