

What is the Summer Exhibition?

How old are you?

This year, the Summer Exhibition is 249 years old (and still looking great).

Each year, artists from all over the country send in pictures of their art and a group of Royal Academicians, the artists who make up the Royal Academy, choose which ones to display. The Royal Academicians also exhibit their own work. There are over 1,200 artworks crammed into the galleries. There's a lot to see!



Find

Two works of art
that you don't like.

Why don't you like them?

Is it because of the colours, materials
or something that you see in the artworks?

Note down your ideas.

What is the Summer Exhibition?

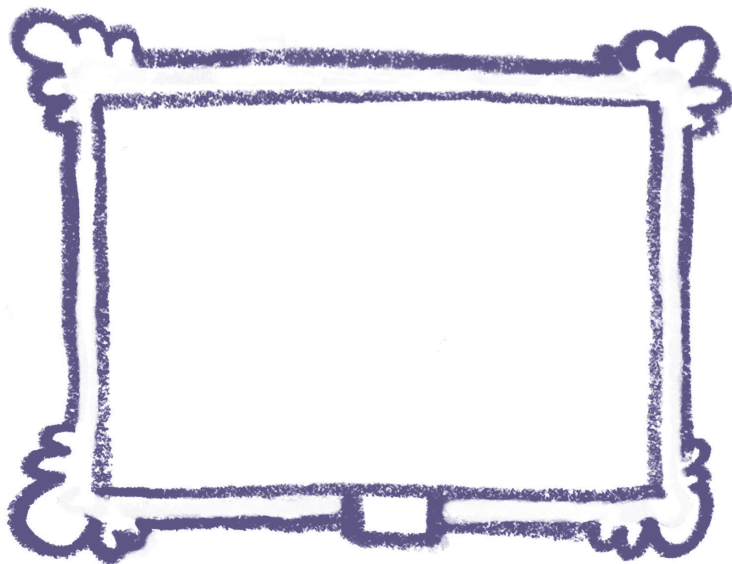


Find

Walk through the exhibition and find...

Five works of art that you like a lot.

Imagine you are zooming in and
draw one small part of one of the artworks here:



In your sketchbook

Design a 249th birthday card for the Summer Exhibition

Sculptures

There are sculptures in many of the galleries in the Summer Exhibition.

Sculptures are three-dimensional works of art. They can be made from lots of different things and can be all different sizes.

An artist might use a hard material like stone or metal, or a soft material like wax or clay or everyday materials they find around them.

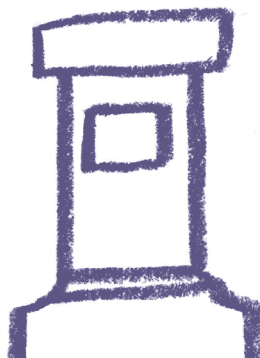


Look

Find a sculpture and slowly walk all the way around it.

What do you think it is made from?

Wax Metal Marble
Concrete Wire Food
Plastic Wood



Sculptures

Crouch down and draw the sculpture looking up from the floor.



Imagine you are above the sculpture.
Draw what you think you would see, looking down.

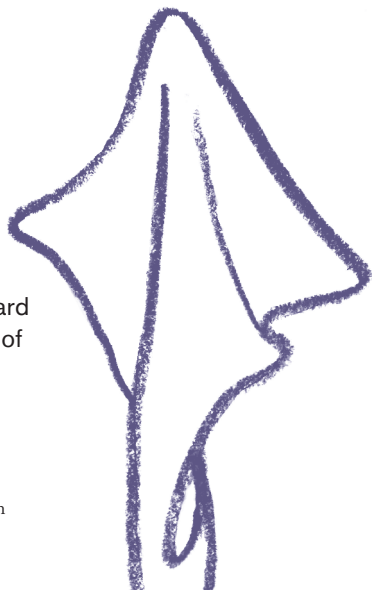
What have you discovered
about this sculpture?



In your sketchbook

Go outside to the Annenberg Courtyard
(where you came in) and do a sketch of
Yinka Shonibare's *Wind Sculpture*.

Colour it in when you get home.



Paintings

Find a room with a lot of paintings.
Paintings have been exhibited at the Summer Exhibition since 1769, for nearly 250 years.

Some show people, places and things.
Some are abstract, showing colours and shapes instead.



Find

The countryside

Plants

Flowers

A painting of people

A painting of animals

Which different animals
can you find?



Paintings



Look

Find paintings that have...

Colourful shapes and lines
Rough and bumpy paint

Draw some of the shapes you can see.



In your sketchbook

Draw a sketch of a painting
you would like to make.

Is it abstract or does it show
people, places and things?



Prints

Find a room where you can see lots of prints,
hung all the way up to the ceiling.

There are a lot of ways to make a print.
First, an artist creates a design on a piece
of metal, wood or other surface. They ink
the design, then cover it with a piece of paper,
and run it through a printing press.
The printed image comes out back to front
from the original design.



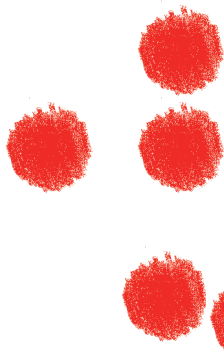
Look

Find a print that you like in the Summer
Exhibition. List adjectives that describe
the design.



An artist can make lots and lots of prints
from the same design. Find a print with lot
of red dots next to it.

A red dot means someone has a bought
one print from a series.

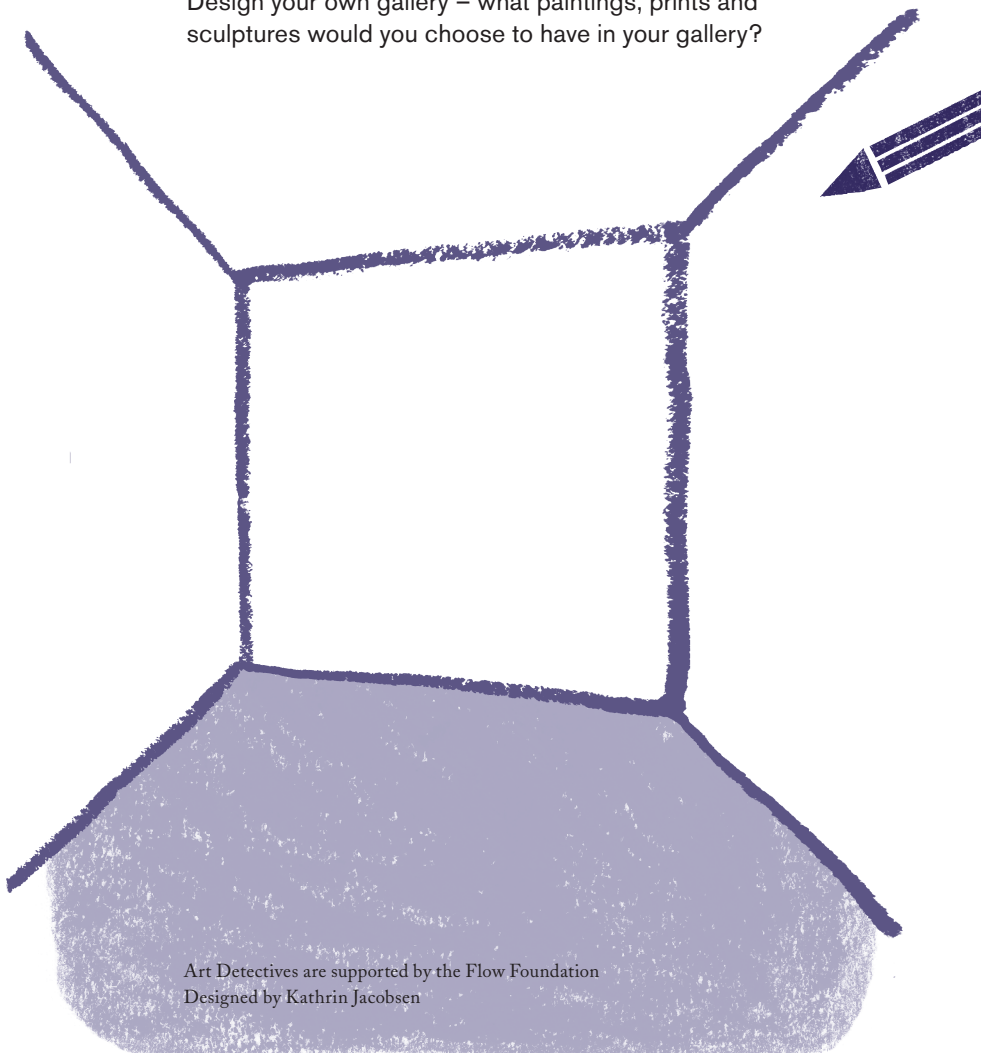


RA

Art Detectives Summer Exhibition 2017

Prints

Design your own gallery – what paintings, prints and sculptures would you choose to have in your gallery?



Art Detectives are supported by the Flow Foundation
Designed by Kathrin Jacobsen