

# RA

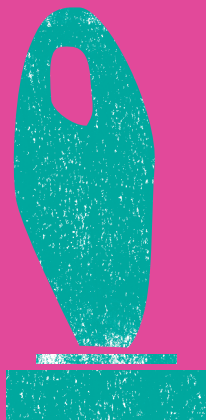
## Art Detectives

A guide for  
young visitors

Art Detectives are supported  
by the Flow Foundation

### Summer Exhibition 2015

You will need  
a pencil to  
write and draw



## Introduction

Welcome to the Summer Exhibition 2015! This year's exhibition has been coordinated by artist Michael Craig-Martin RA. His vision for the show was a 'summer of colour', and he's certainly achieved that! Look out for brightly painted galleries, and don't miss the mind-blowing multi-coloured main staircase, decorated by artist Jim Lambie. This year you'll find over 1100 works bursting out of our galleries – everything from paintings and prints to sculptures, photography and film. All the work on display is new or recent art (known as 'contemporary art'), being made by artists all over the country right now! It's a rare and exciting snapshot of what is happening in the art world today. Anyone can enter their work, from famous artists to people dabbling in painting at home, and everything in the show has been chosen by a group of artists known as the Royal Academicians. Let's explore...

Sponsored by



➤ A BNY MELLON COMPANY™

## Section 1.

## Start in the Wohl Central Hall



Find number 18:

Matthew Darbyshire, *Captcha No.11*  
(*Doryphoros*), Multiwall polycarbonate  
and stainless steel

This piece is based on one of the most famous sculptures in Ancient Greece – the ‘Doryphoros’ or ‘Spear-Bearer’ by Polykleitos, made in about 440 BCE.

The original classical sculpture would have been cast in bronze and then marble copies were made later.  
What do you think this version is made of?

---

---

---

Why do you think the artist has recreated this sculpture using modern materials?

---

---

---

Does the sculpture change as you walk around it? How?

---

---

---

---

---

Section 1.

(continued)



Find number 17:  
Liam Gillick, *Applied Projection*  
*Rig*, Anodised aluminium  
and plexi-glass

As well as hanging on the walls and covering the staircase, there is art above you at this year's Summer Exhibition!

Look up at Liam Gillick's colourful panels.  
What effect do they have on the room and the rest of the artworks?

---

---

---

---

---

---

Do the coloured panels make you look more closely at the colours in the paintings, or are they distracting? Tell us what you think!

---

---

---

---

---

---



## Section 2.

Turn left into Gallery III

Here we are in another brightly painted gallery – this time pink! While you look at the paintings in this room, think about what effect the pink walls have on the way you look at the artworks.

We have taken some close-up snapshots of pieces of art in this room! Can you work out which image each detail comes from?

Write its number underneath the snapshot!



## Section 3.

Turn left into Gallery II



Find number 170:  
David Nash RA, *Cork Dome*,  
Cork

David Nash RA is one of the leading sculptors in British art. His work is usually made of natural elements like unseasoned wood, which changes over time as it dries. Other works of his have also been exposed to fire and water.

Look closely at the texture and variety of colour in the cork dome. Choose some words from the selection below that best describe how this sculpture looks to you:

Welcoming   Man-made   Soft  
Hard   Natural   Fragile

## Section 4.

Turn left into Gallery I



Find number 254:  
Grayson Perry RA, *Julie and Rob*,  
Tapestry

This tapestry by artist Grayson Perry RA is of a couple called Julie and Rob. While they are fictional, Perry has actually built the house he imagined they live in, manufactured with the architectural company FAT.

What do you think the artist is trying to tell us about these people (for example, their likes and interests) through the way he has shown them here?

---

---

---

Section 4.

(continued)



Find number 254:  
Grayson Perry RA, *Julie and Rob*,  
Tapestry

Grayson Perry has made these figures seem very realistic through his use of detail and colour.  
How many colours can you count on the man’s face?

---

---

---

---

---

Does the artist use any unusual colours  
for skin tones or hair?

---

---

---

---

---

---

---

Section 4.

(continued)



Find number 286:  
Ivor Abrahams RA, *Hedge and Entrance*,  
Wood, flock fibre, mixed media

Ivor Abrahams, who died earlier this year, was a British sculptor and printmaker. He made his reputation with colourful sculptures of hedges and garden walls.

How has the artist created a sense of the feel and weight of the greenery of the hedge?

---

---

---

---

---

---

Would you call this a sculpture or a painting?  
Tell us why...

---

---

---

---

---

---

---

## Section 4.

(continued)



This room is hung high with a lot of different pictures. If you look closely, you'll find many birds peeking out from within the frames...

How many pictures can you spot?  
Write their numbers in the space below.

[illegible]

## Section 5.

Head back to the Large Weston Room



Find number 428:  
Karl Singporewala, *Franklin's  
Morals of Chess (Jade)*,  
Translucent acrylic

'The Morals of Chess' was an essay written by the philosopher Benjamin Franklin. In it, he compared the game of chess to life, and writes that we can learn foresight and caution from the game.

This chessboard is made up of famous buildings in London (instead of normal chess pieces like castles, pawns and queens)! Can you find:

The Shard  
The Tower of London  
St Paul's Cathedral

Are there any others that you recognise?

---

---

---

In this work, do you think that the buildings of London look like they might be at war with each other? Why or why not?

---

---

---

---

---

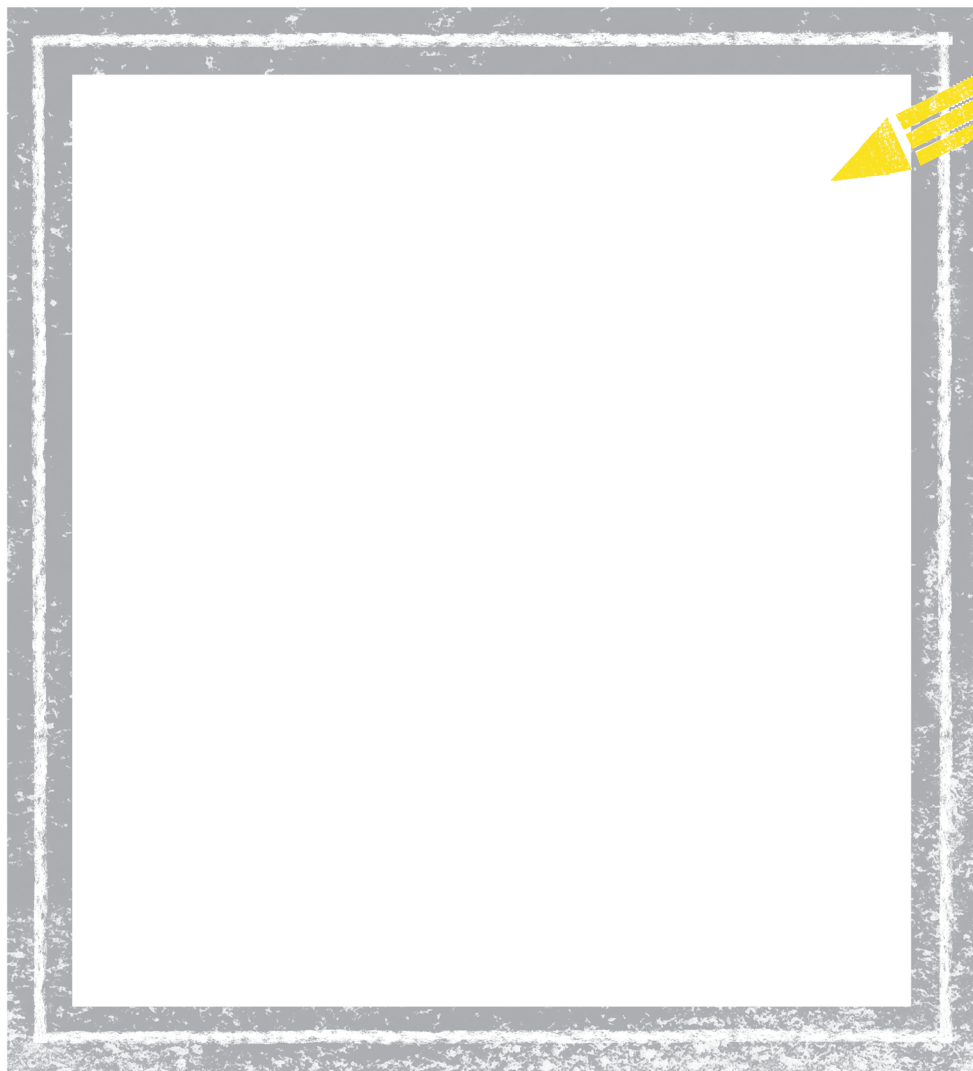
---



## Section 5.

(continued)

Draw your favourite building  
(in London or elsewhere)  
in the box below!



Section 7.

Keep on going into the Small Weston Room



Find number 480:  
William Kentridge Hon RA, *Remembering the Treason Trial*, Lithograph

All the works in this room are by the South African artist William Kentridge Hon RA. His work is often concerned with the political upheaval of South Africa.

This 63-panel piece refers to Nelson Mandela’s trial of the 1950s. It’s printed on pages from an encyclopedia.

Why do you think the artist has chosen to use an encyclopedia as the basis for this work? You might want to think about where paper comes from, and how this relates to the images in the room.

---

---

---

---

Read the sentences on this artwork. Where do you think the artist has got these from? His imagination, or from real life, like a book or newspaper? What do you think they might refer to?

---

---

---

---

---

---

## Section 7.

## Double back to Gallery IV



Find number 548:

Lisa Milroy RA, *One-to-One*, Acrylic on hand sewn fabric, hand-painted gloves, wood, clay, coat hanger and nail

Throughout her career, artist Lisa Milroy has been interested in painting clothes.

Would you describe this as a sculpture?  
Why or why not?

[illegible]

## Section 7.

Turn right into Gallery V



Find number 702:

Mychael Barratt, *London Map of Days*,  
Etching and aquatint

This work features 366 date-specific references to events or people throughout the history of London.

Here are some examples of dates the artist has picked out:

25 May 1850: the first hippopotamus in Europe since the Romans arrives at London Zoo

18 May 1873: Vincent van Gogh arrives in Brixton where he lives for a year

11 April 1633: the first bananas are sold in London at a shop in Snow Hill

Look closely at the picture.  
Can you spot:

The Beatles  
Grayson Perry RA  
Winnie the Pooh  
Guy Fawkes  
Sherlock Holmes  
King Henry VIII  
Queen Victoria

## Section 8.

## Walk through to Gallery VI



Find number 741:  
Sir Anish Kapoor RA,  
*Untitled*, Acrylic

This sculpture has been described as on the border of 'something that is manufactured and something that is imagined'.

Choose some words from the selection below that best describe how this sculpture looks to you:

Light   Natural   Scientific  
Magical   Confusing

## Section 9.

## Walk through to Gallery VII



Find number 834:  
Chris Orr RA, *Moonlight Sonata*  
(*While the Mice are Away the Cats will Play*), Lithograph and screenprint

These naughty cats are getting into all kinds of trouble!

Can you find:

A cat covered in paint  
A cat in the fridge  
A cat with a jug on his head

Section 10.

Walk through to Gallery VIII



Find number 933:  
David Mach RA, *Buddha*,  
Coat hangers and gold leaf

David Mach RA has been making incredible sculptures out of unusual materials for many years. For example, he created a series called 'Matchheads', made from wooden matchsticks.

How many coat hangers do you think the artist used to create this sculpture?

---

---

---

---

---

Why do you think the artist has used a material like coat hangers to make this sculpture?

---

---

---

---

---

---

---

---

---

---



## Section 10.

## Walk through to Gallery IX



## Find number 962:

Elizabeth Zeschin, *Sadie and the Bird*,  
Archival giclée print

**This striking photograph is of a young lady holding a dead bird in her hands.**

Can you imagine what this girl might be thinking?  
Describe her thoughts here.

[illegible]

Section 11.

Walk through to the Lecture Room



Find number 1100:  
Tim Shaw RA, *Erebus (Man on Fire Version II)*, Painted foam, polythene and steel

This sculpture was originally a proposal for a design for the fourth plinth in Trafalgar Square.

This large sculpture takes up a big space in the room. Does size affect the way you notice it?

---

---

---

---

---

---

How does this sculpture make you feel?

---

---

---

---

---

---

---

## Section 12.

Double back into Gallery X

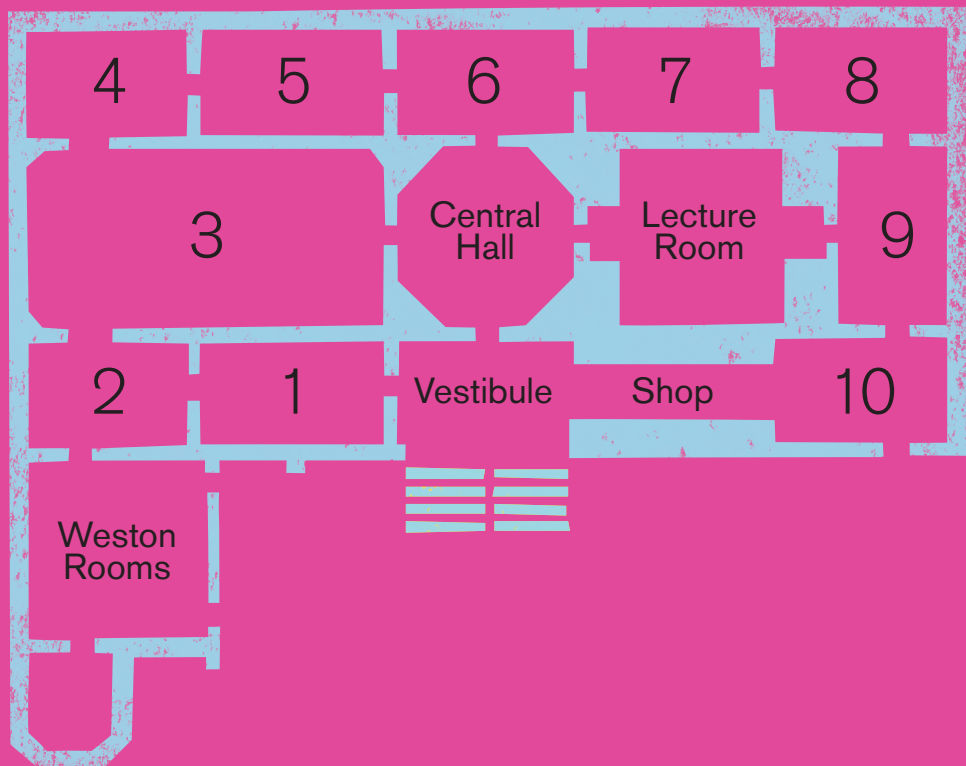


Find number 1111:  
Tom Phillips RA, *A Humument*,  
Artist's book

This gallery has only  
one work on display –  
*A Humument* by Tom Phillips  
RA. In 1966 he found an  
old book and altered every  
page by drawing over it.

Can you find on the pages:

A rose  
A light bulb  
A cricketer



Written by  
the Learning Department  
© Royal Academy of Arts  
Designed by  
Kathrin Jacobsen

Keep us up to date with what you discover, tweeting  
your photos @royalacademy using #RASummer

If you would like to see your drawings on the RA website,  
please hand in your completed Art Detective at the  
Reception Desk. Alternatively, if you would like to  
work on your picture at home and send it to us later,  
you can post it to:

Learning Department  
Royal Academy of Arts  
Burlington House  
London  
W1J 0BD