

## **Burlington House and Keeper's House**

Burlington House  
Piccadilly  
London W1J 0BD

## **Burlington Gardens**

6 Burlington Gardens  
London  
W1S 3ET

General Enquiries: 020 7300 8000

## **General opening hours**

10am to 6pm Saturday–Thursday  
(last admission to galleries 5.30pm)

10am to 10pm Friday  
(last admission to galleries 9.30pm)

Opening times and access to the  
Keeper's House and John Madejski  
Fine Rooms do vary.

## **Please note**

The Royal Academy of Arts is housed on two separate sites. Our main building is Burlington House, on Piccadilly, which includes the Keeper's House. Our other building, Burlington Gardens, is situated directly behind Burlington House. Currently, there is no direct access between the two sites. To get from one site to the other, you need to use Old Bond Street, Sackville Street or Burlington Arcade which has ramped access on request.

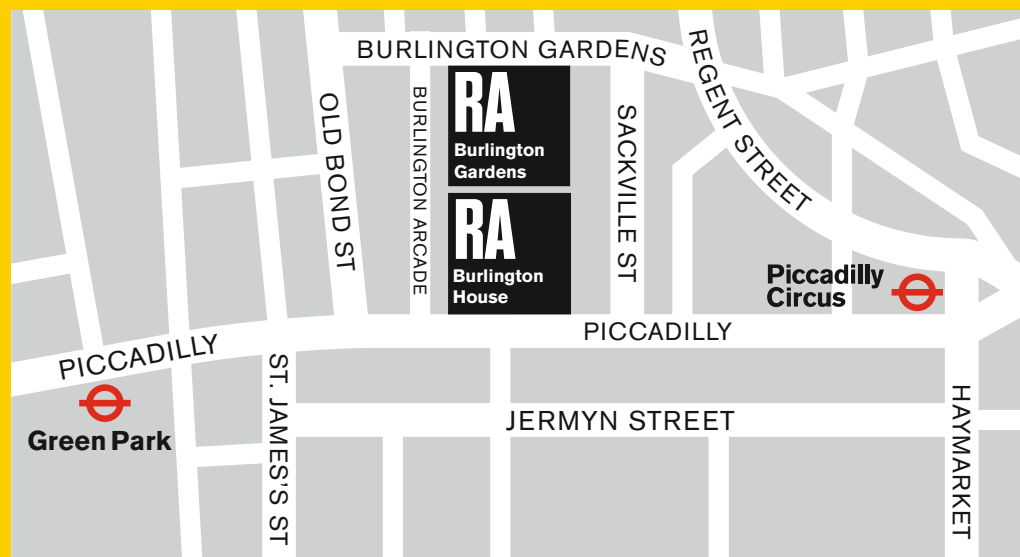
## **Contact the Access Team**

To find out more about the RA's dedicated programmes and services for disabled audiences, please visit our website or contact us:

**Website** [royalacademy.org.uk](http://royalacademy.org.uk)

**Email** [access@royalacademy.org.uk](mailto:access@royalacademy.org.uk)

**Telephone** 020 7300 5732



REGISTERED CHARITY NUMBER 212798/DESIGN 01/02/ILLUSTRATIONS BY RUSSELL BELL/PRINTED BY TRADEWINDS/PHOTO BY ROY MATTHEWS, © ROYAL ACADEMY OF ARTS

# Royal Academy of Arts **Access Guide**





### Underground Piccadilly Circus

(approximately 480m from Burlington House entrance)

### Green Park

(approximately 400m from Burlington House entrance). This station has level access between the street and platforms.



### Buses

Four bus routes stop on Piccadilly: Nos. 14, 19, 22 and 38.

### Driving

You can drive up close to the entrance of Burlington House by entering the courtyard from Piccadilly.

### Parking for Blue Badge Holders

We have two parking spaces available for blue badge holders in the courtyard at Burlington House.

- Please book at least one week in advance of your visit.
- To book call: 020 7300 8028



### Ticket Booking

- Visitors with disabilities are eligible for concessions and may bring a companion free of charge.
- For general ticket enquiries and group bookings please call 020 7300 5635 or visit our website (concessionary rates are available for groups of people on low incomes).



### Wheelchairs

- Standard sized manual wheelchairs are available for visitors with mobility impairments. These can be found in the entrance of the cloakroom.
- To book a wheelchair in advance of your visit please call 020 7300 8028 or email [access@royalacademy.org.uk](mailto:access@royalacademy.org.uk)

### Level Access

All areas of Burlington House and the Keeper's House are accessible, except the upper garden area in the Keeper's House.



### Electric Mobility Scooters

are allowed in the galleries.



### Guide and Assistance Dogs

Guide, hearing and assistance dogs are permitted in all areas of our galleries.



### Induction Loops

Induction loops are in operation at all Information Desks in Burlington House and Burlington Gardens, and in the Royal Academy shop. If your hearing aid has a specific function for using these, please switch it on to make use of them.



### First Aid

There are a number of trained First Aiders in the building. Please ask the nearest member of staff if you require any help.

### Security Alerts

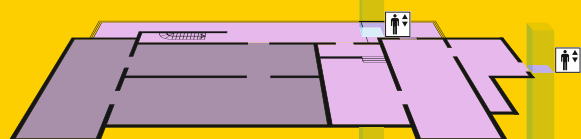
- In the event of a security alert, please follow instructions from our staff members.
- Evacuation chairs are available, and our security staff are trained to use these.



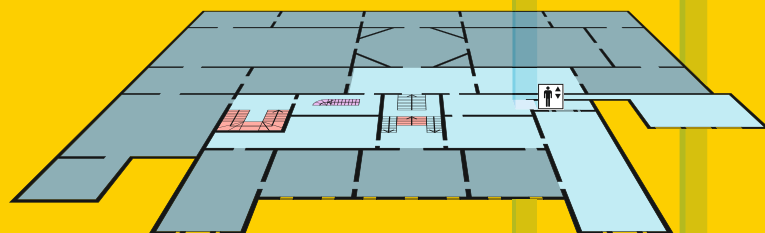
### Phones

- There are two red public phone boxes under the entrance arch in the courtyard at Burlington House.
- For people who are unable to access these phones, staff on our reception desks will be happy to make important phone calls for you.

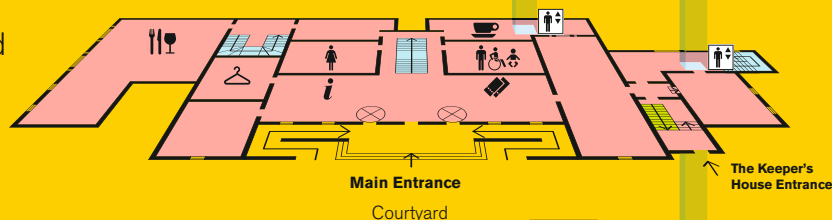
Second



First

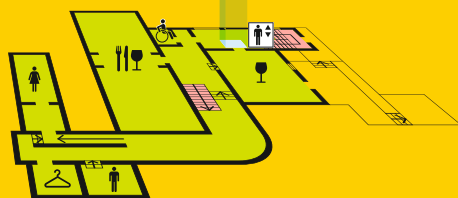


Ground



Lower

Ground



Lift



Accessible toilets



Cloakroom



Information



Café



Tickets



Restaurant



Men's toilets



Bar



Women's toilets



Baby Changing

## Burlington House

There are two ramped entrances with hand rails.

There are two revolving doors into the building and one central wheelchair accessible door.

## The Keeper's House

Level access to the Keeper's House can be gained through the Sir Hugh Casson Room Café on the far right side of the Front Hall at Burlington House.

General access to the Keeper's House is to the right of the main entrance to Burlington House.

## Cloakroom

The cloakroom is situated on the far left side of the Front Hall. The cloakroom is for coats, umbrellas and small bags and has very limited capacity.

Items may be subject to search. Items must be no larger than 280mm width by 380mm height and 400mm depth.

We regret that we cannot accept suitcases, hold-alls or large backpacks in the cloakroom or in the galleries.

## Toilets

An accessible unisex toilet is available on the ground floor at the entrance to the men's toilets, on the right of the main stairs.

## Baby Changing and High Chairs

A baby changing facility is available in the accessible toilet at the entrance to the men's toilets. High chairs are available in the Restaurant and Café. For breastfeeding, the most comfortable area may be the leather seats by the entrance to the Burlington House restaurant.





### Seating

There are black wooden window seats in the Front Hall.



### Restaurant and Cafés

The Burlington House Café and Restaurant are located to the back and either side of the main stairs and can be very busy during peak times.

During the summer months, the Burlington House Café relocates to the courtyard.

The Sir Hugh Casson Room and Belle Shenkman Café are the home of our RA Friends until 4pm, after which time they are open to the public.



### Stairs

The main stairs have 30 steps with two landings.



### Lifts

The Sackler lift is located in the Burlington House Café (situated to the back right of the main stairs) and allows access to our Main Galleries on the first floor and the Sackler Galleries on the second floor. The doors are 110cm wide.



### Cloakroom

The cloakroom is situated near the men's toilets.

The cloakroom is for coats, umbrellas and small bags and has very limited capacity. Items may be subject to search. Items must be no larger than 280mm width by 380mm height and 400mm depth.



### Toilets

There is an accessible unisex toilet by the Restaurant and there are ambulant toilets in both the men's and women's toilets. There is also an accessible unisex toilet and a unisex ambulant toilet on the First Floor Mezzanine, which you can get to using the Keeper's House lift.



### Baby Changing and High Chairs

A baby changing facility is available in the accessible toilet. High chairs are available in the Restaurant and Café.



### Restaurant and Bar

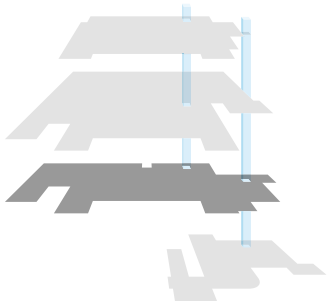
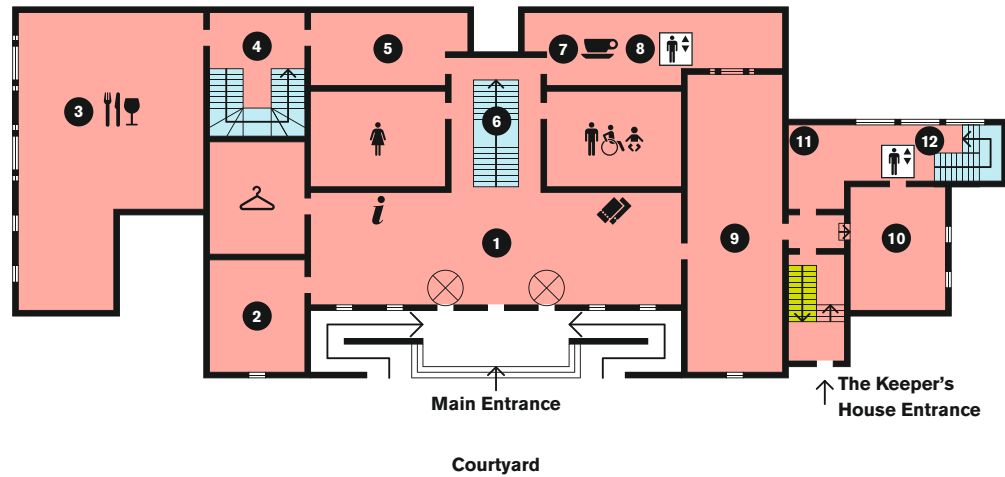
The only area that does not have level access is the upper level of the garden seating area that connects to the Shenkman Bar.



### Lifts

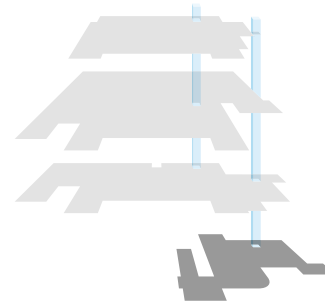
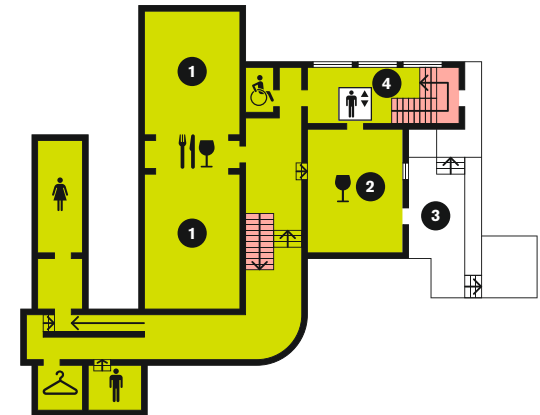
A lift is situated next to the Belle Shenkman Room and allows level access to all rooms in the Keeper's House. It also allows level access to the Library, Print Room and Archives. The doors are 80cm wide.

## Ground floor

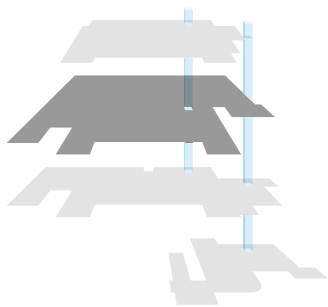
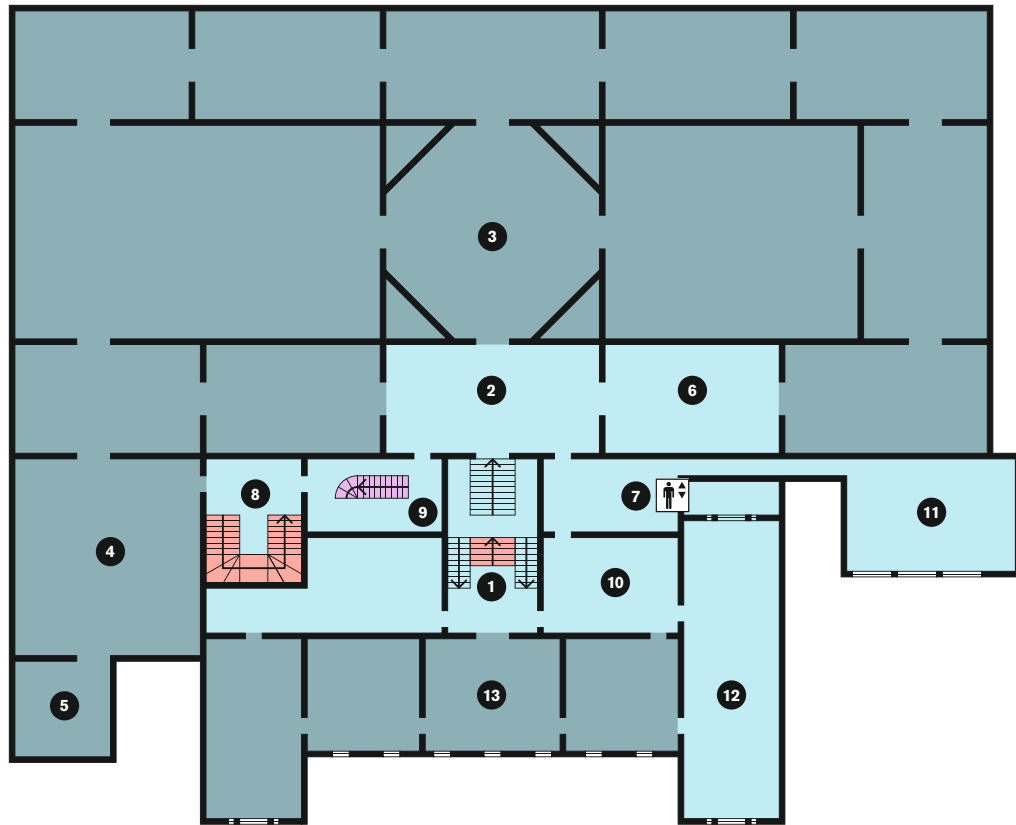


- |                                |  |
|--------------------------------|--|
| <b>1</b> Front Hall            | <b>9</b> Sir Hugh Casson Room          |
| <b>2</b> Academicians' Room    | <b>10</b> Belle Shenkman Room          |
| <b>3</b> Restaurant            | <b>11</b> Keeper's House, Welcome Desk |
| <b>4</b> Norman Shaw staircase | <b>12</b> Keeper's House lift          |
| <b>5</b> Ramped floor          |  |
| <b>6</b> Main stairs           |  |
| <b>7</b> Café                  |  |
| <b>8</b> Sackler lift          |  |

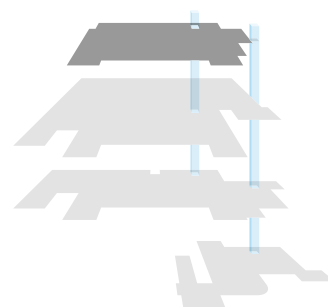
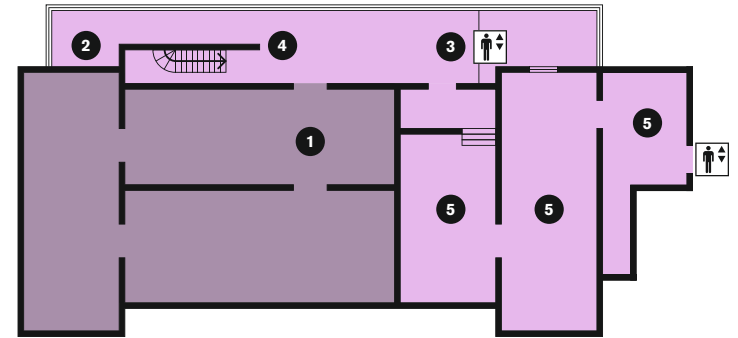
## Lower Ground floor



- |                                    |
|------------------------------------|
| <b>1</b> Keeper's House Restaurant |
| <b>2</b> The Shenkman Bar          |
| <b>3</b> The Garden                |
| <b>4</b> Keeper's House lift       |



- |                            |                                    |
|----------------------------|------------------------------------|
| <b>1</b> Main stairs       | <b>8</b> Norman Shaw staircase     |
| <b>2</b> Vestibule         | <b>9</b> Sackler staircase         |
| <b>3</b> Main Galleries    | <b>10</b> Tennant Gallery          |
| <b>4</b> Large Weston Room | <b>11</b> Academicians' Room       |
| <b>5</b> Small Weston Room | <b>12</b> Reynolds Room            |
| <b>6</b> Shop              | <b>13</b> John Madejski Fine Rooms |
| <b>7</b> Sackler lift      |                                    |



- |   |
|---|
| <b>1</b> The Sackler Galleries              |
| <b>2</b> Michelangelo's <i>Taddei Tondo</i> |
| <b>3</b> Sackler lift                       |
| <b>4</b> Sackler staircase                  |
| <b>5</b> Library, Print Room and Archives   |



## First and Second floor

### RA Galleries and Shop



#### Seating – Permanent

There is seating provided throughout all our exhibition galleries. There are stone benches on the far side of the Sackler Galleries by the 'Taddei Tondo'.

#### Seating – Portable

Portable folding stools are available for use in the galleries and can be found at the entrances to exhibitions.



#### Stairs

The Sackler stairs are situated to the left at the top of the main stairs. They have 54 steps with three landings and are made of glass.



#### Large Print Gallery Guides

Large print lists of works and gallery guides are available for most of our exhibitions and are free of charge. They are available from the wall holders in the galleries, or from the gallery entrance. They are also available to download from our website.



#### Audio Guides

Audio guides are available for the majority of our Main and Sackler Gallery exhibitions and include a number of audio described artworks. These are free of charge for disabled visitors. Transcripts of our audio guides are available on request from the Audio Guide Desk at the entrance of the exhibition.

#### Library, Print Room and Archives

The RA library and archive is open to the public by appointment from Tuesday to Friday, 10am to 1pm and 2pm to 5pm. Please contact the Library Information Service on 020 7300 5737 or [library@royalacademy.org.uk](mailto:library@royalacademy.org.uk). The Print Room often holds exhibitions taken from the RA's Collection. Level access can be gained to the Library and Print Room via the Keeper's House lift.

PHOTO BY ROY MATTHEWS, © ROYAL ACADEMY OF ARTS





### Wheelchair User Gallery Escorts

If you need someone to assist you with a wheelchair or lend a supportive arm, a trained volunteer escort can assist you. To book an escorted visit, contact our Access Team. Please allow two weeks notice for your booking as this is a volunteer service.



### Audio Described Tours

We organise audio described tours and handling sessions for all our major exhibitions. If you are unable to attend these, recordings of these tours are available on our website. Trained volunteers can also offer descriptive tours of an exhibition. Please book this volunteer service two weeks in advance of your visit. To book either of these, contact the Access Officer or visit our website.

### Summer Exhibition

Every year a number of sculptures in the Summer Exhibition are available to be explored by touch. They are identified by a list available online and within our Large Print Guides in the galleries.



### British Sign Language and Speech-to-text transcription

For deaf, deafened and hard of hearing visitors, we organise talks and gallery tours in British Sign Language and in spoken word with speech-to-text transcription. For deaf or hard of hearing children, Art Detective worksheets are available for all exhibitions from the Information Desk.

PHOTO BY FRASER MARR © ROYAL ACADEMY OF ARTS

